

STANDARD DEPARTURE CHART-INSTRUMENT

ZPPP KUNMING/Changshui RWY22

VAR1° W

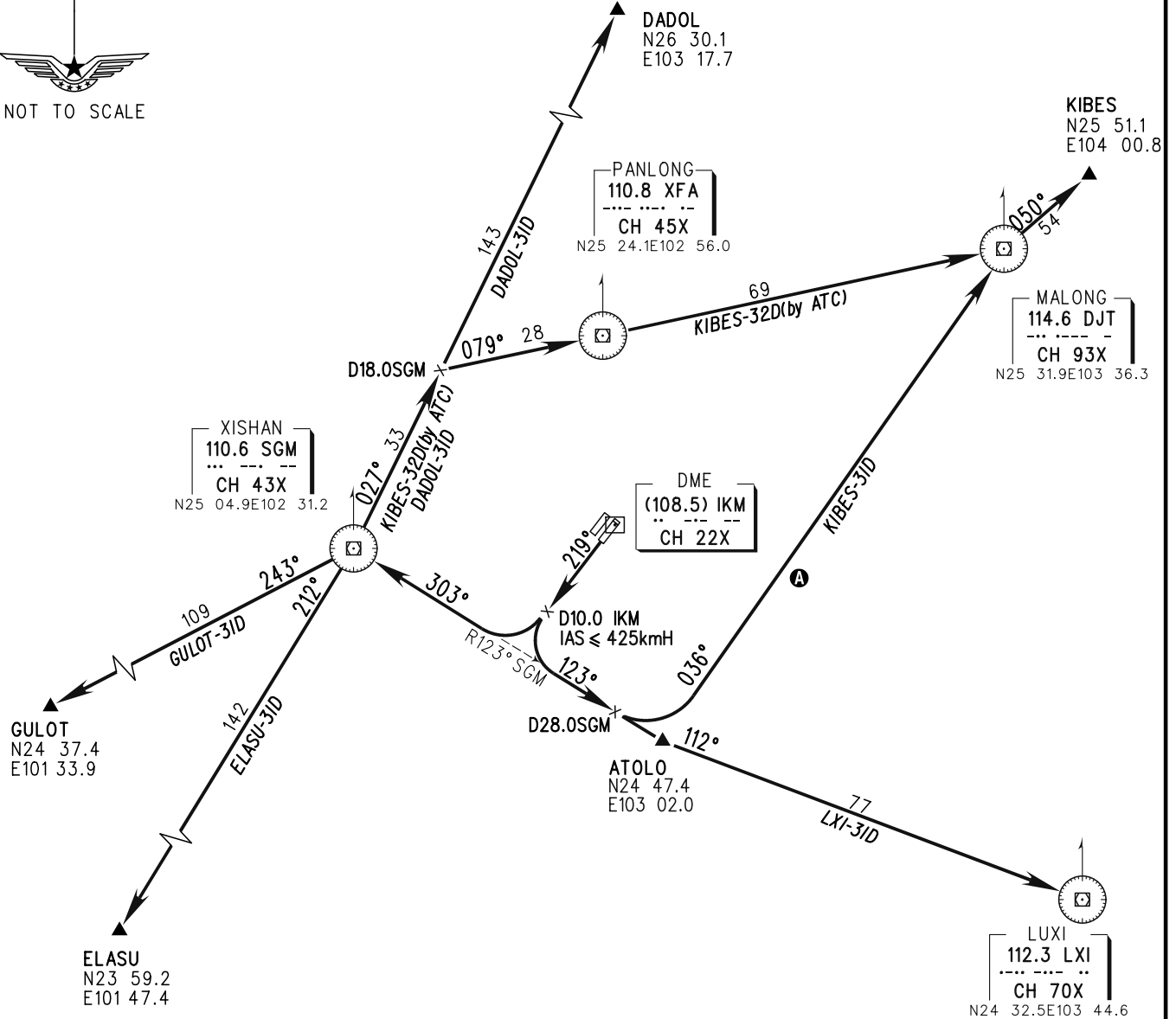
BEARINGS ARE MAGNETIC
ALTITUDES, ELEVATIONS
AND HEIGHTS IN METERS
DME DISTANCES IN
NAUTICAL MILES
DISTANCES IN KM

| | |
|---------------------|----------------------|
| ATIS 128.45 | TWR(E) 118.1(118.85) |
| D-ATIS 131.45 | TWR(W) 130.6(118.85) |
| AP01 119.0(125.55) | TL 6000 |
| AP02 123.8(125.55) | TA 5400 |
| AP03 124.25(127.9) | 5700(QNH>1031HPA) |
| AP04 121.15(126.55) | 5100(QNH<=979HPA) |
| AP05 120.35(127.9) | |

| |
|-------------------|
| TL 6000 |
| TA 5400 |
| 5700(QNH>1031HPA) |
| 5100(QNH<=979HPA) |

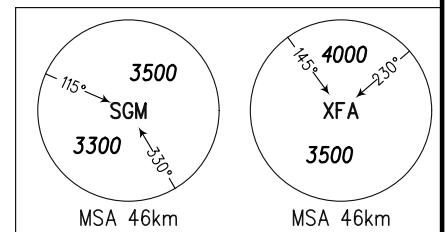


NOT TO SCALE



Note:

1. Ⓐ Deviation to east of R036° DJT is forbidden.
2. While simultaneous operation implemented, turn RIGHT after take-off shall be permitted by ATC.
3. Under radar control service, actual flight ALT instructed by ATC.



Changes: Nil.