

STANDARD DEPARTURE CHART-INSTRUMENT

ZPPP KUNMING/Changshui
RNAV RWY04

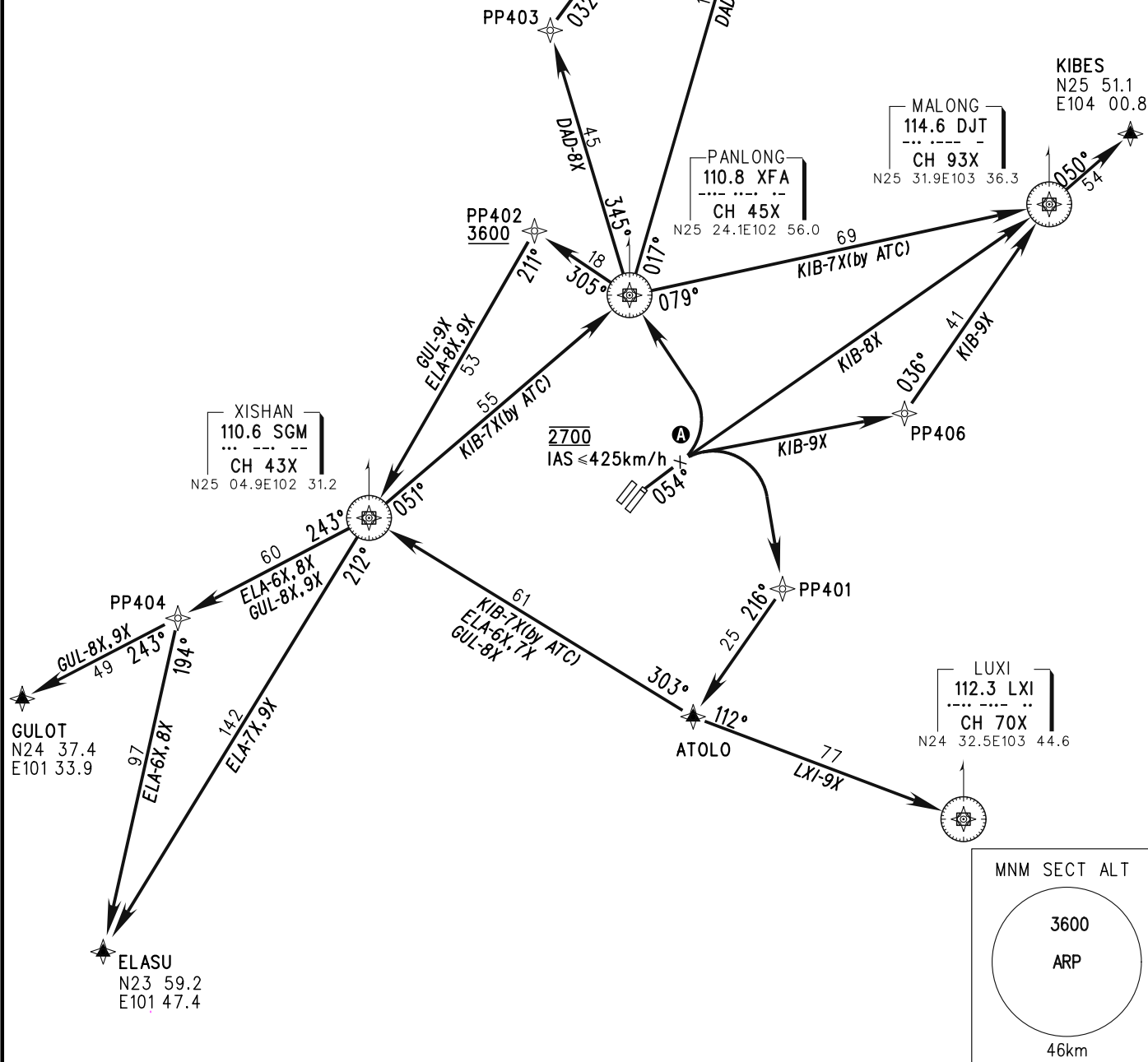
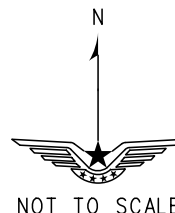
VAR1° W

BEARINGS ARE MAGNETIC ALTITUDES, ELEVATIONS AND HEIGHTS IN METERS DME DISTANCES IN NAUTICAL MILES DISTANCES IN KM	ATIS 128.45 D-ATIS 131.45	TWR(E) 118.1(118.85) TWR(W) 130.6(118.85)
	AP01 119.0(125.55) AP02 123.8(125.55) AP03 120.35(127.9) AP04 121.15(126.55) AP05 124.25(127.9)	TL 6000 TA 5400 5700(QNH≥1031HPA) 5100(QNH≤979HPA)

1. RADAR REQUIRED.
2. GNSS, DME/DME/IRU REQUIRED.
3. RNAV1.

Note:

1. Ⓐ While RWY simultaneous operation implemented, DAD-8X/9X, LXI-9X, GUL-9X, ELA-8X/9X by ATC.
2. Under radar control service, actual ALT by ATC.
3. When taking off, forbidden to turn before DER.



MNM SECT ALT

3600
ARP

46km

Changes: New chart.