

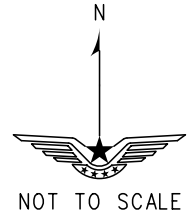
STANDARD DEPARTURE CHART-INSTRUMENT

ZPPP KUNMING/Changshui
RNAV RWY21

VAR1° W

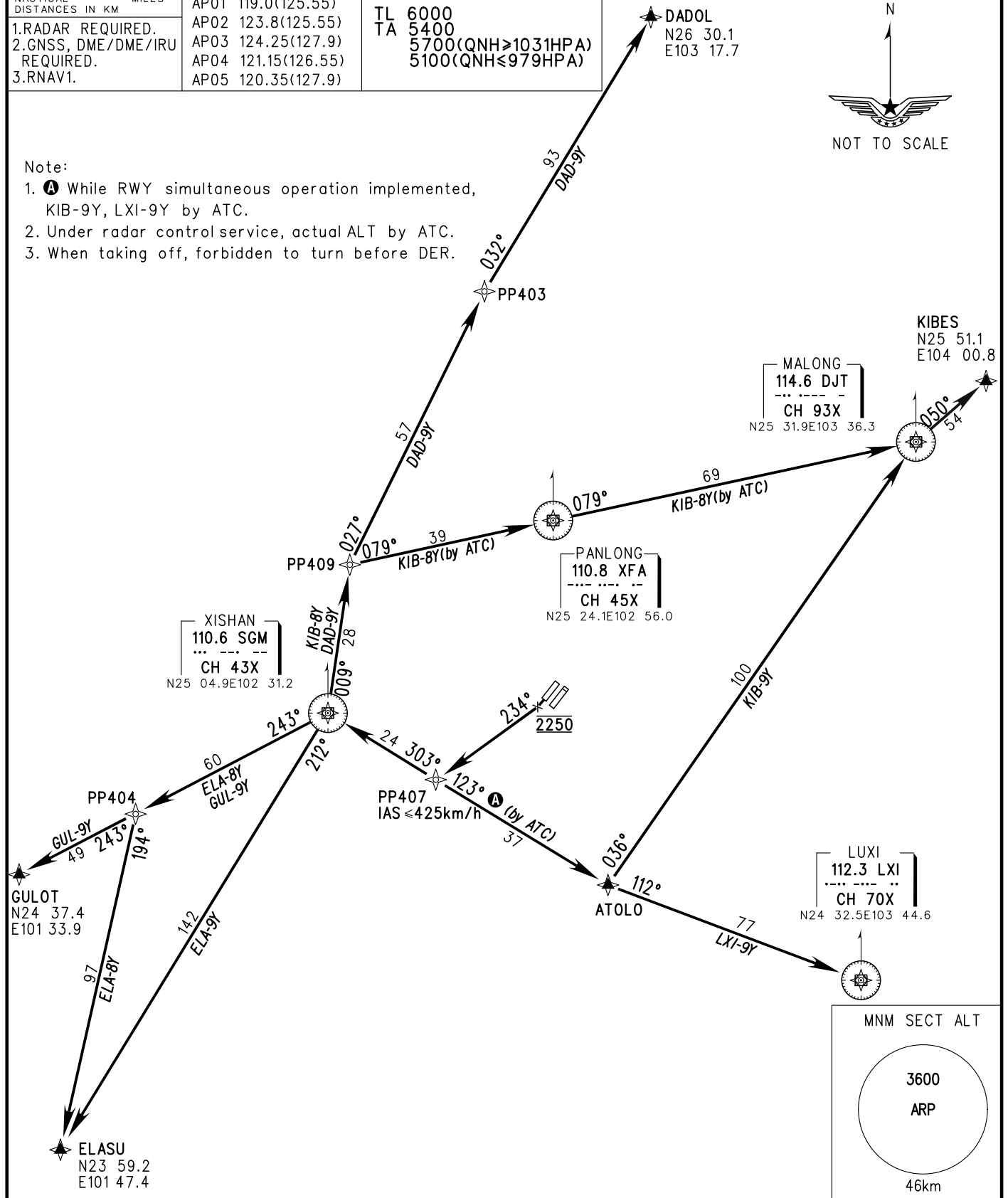
BEARINGS ARE MAGNETIC ALTITUDES, ELEVATIONS AND HEIGHTS IN METERS DME DISTANCES IN NAUTICAL MILES DISTANCES IN KM	ATIS 128.45 D-ATIS 131.45	TWR(E) 118.1(118.85) TWR(W) 130.6(118.85)
	AP01 119.0(125.55) AP02 123.8(125.55) AP03 124.25(127.9) AP04 121.15(126.55) AP05 120.35(127.9)	TL 6000 TA 5400 5700(QNH≥1031HPA) 5100(QNH≤979HPA)

1. RADAR REQUIRED.
2. GNSS, DME/DME/IRU REQUIRED.
3. RNAV1.



Note:

1. While RWY simultaneous operation implemented, KIB-9Y, LXI-9Y by ATC.
2. Under radar control service, actual ALT by ATC.
3. When taking off, forbidden to turn before DER.



Changes: New chart.