

# STANDARD ARRIVAL CHART-INSTRUMENT

## ZPPP KUNMING/Changshui

### RNAV RWY03

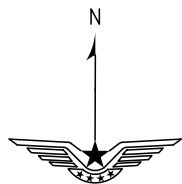
VAR1° W

BEARINGS ARE MAGNETIC  
ALTITUDES, ELEVATIONS  
AND HEIGHTS IN METERS  
DME DISTANCES IN  
NAUTICAL MILES  
DISTANCES IN KM

1. RADAR REQUIRED.  
2. GNSS, DME/DME/IRU  
REQUIRED.  
3. RNAV1.

ATIS 128.45	TWR(E) 118.1(118.85)
D-ATIS 131.45	TWR(W) 130.6(118.85)
AP01 119.0(125.55)	TL 6000
AP02 123.8(125.55)	TA 5400
AP03 120.35(127.9)	5700(QNH≥1031HPA)
AP04 121.15(126.55)	5100(QNH≤979HPA)
AP05 124.25(127.9)	

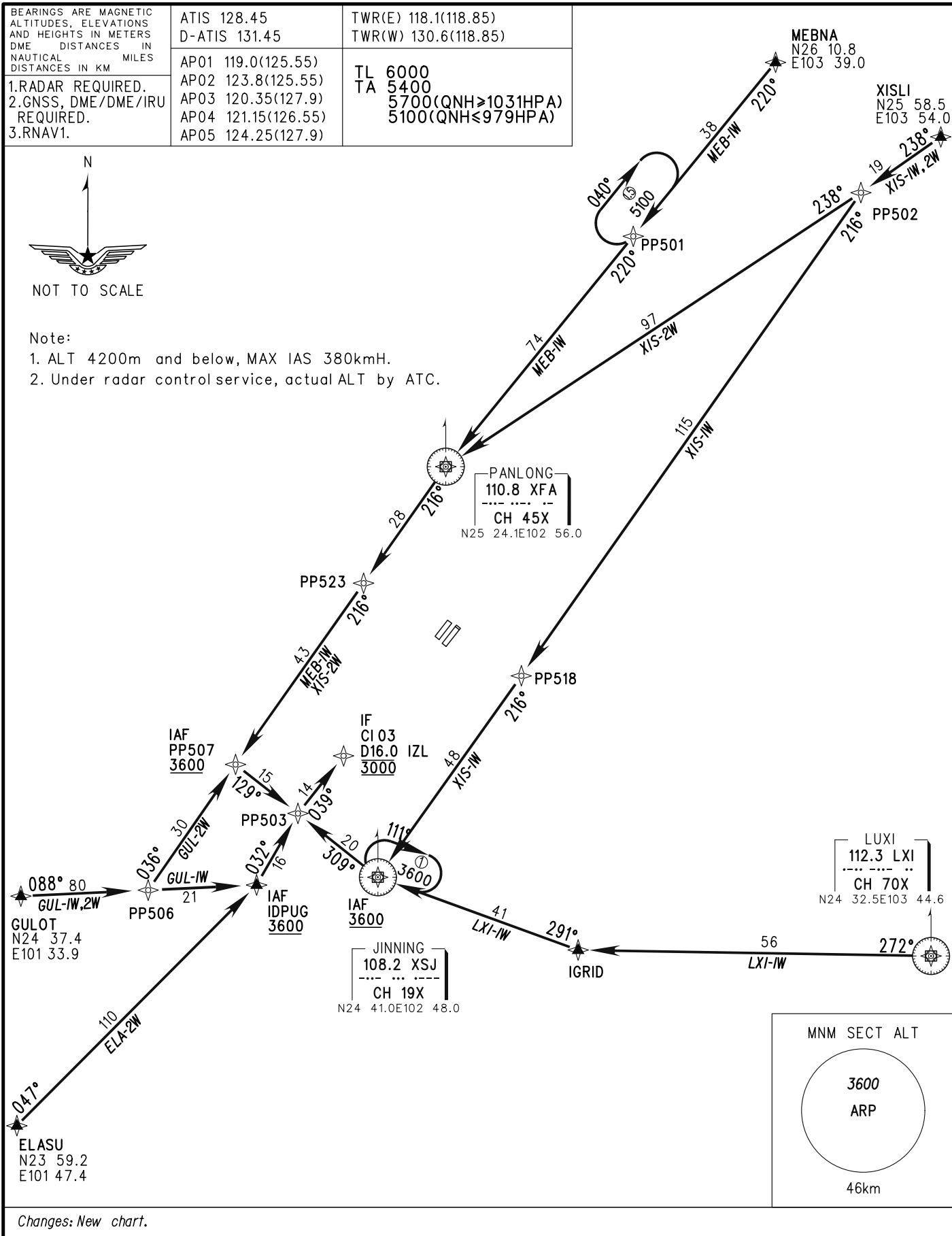
TWR(E) 118.1(118.85)	TWR(W) 130.6(118.85)
TL 6000	TA 5400
5700(QNH≥1031HPA)	5100(QNH≤979HPA)



NOT TO SCALE

Note:

1. ALT 4200m and below, MAX IAS 380kmH.
2. Under radar control service, actual ALT by ATC.



Changes: New chart.