

STANDARD DEPARTURE CHART-INSTRUMENT

VAR5° W

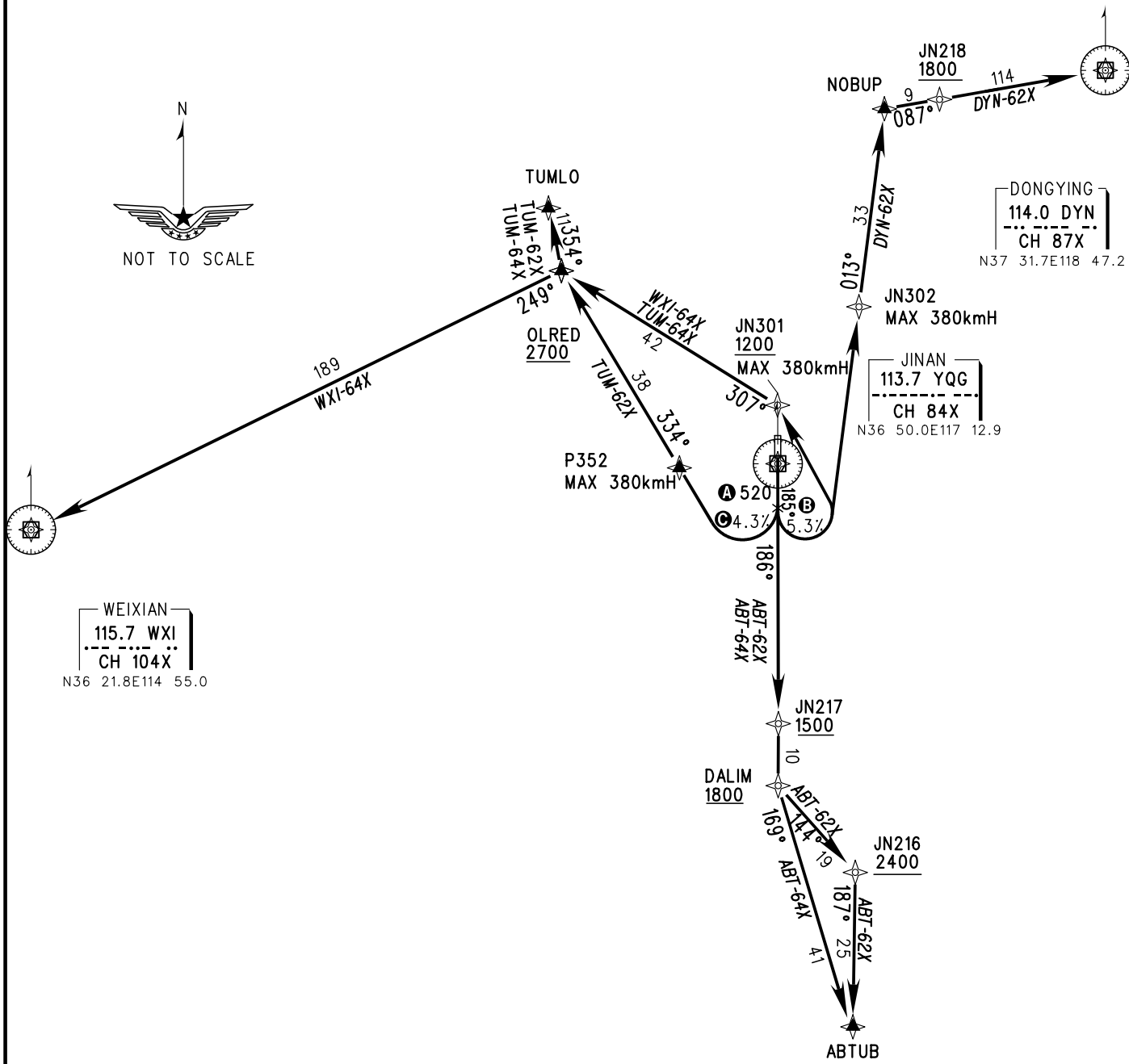
ATIS 127.05
APP 119.05(121.40)
TWR 118.55(130.0)

ZSJN JINAN/Yaoqiang
RNAV RWY19

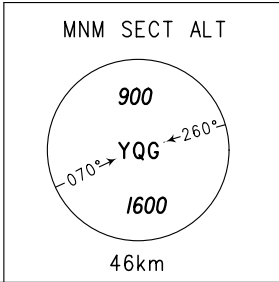
BEARINGS ARE MAGNETIC
ALTITUDES, ELEVATIONS
AND HEIGHTS IN METERS
DME DISTANCES IN
NAUTICAL MILES
DISTANCES IN KM

TL 3600
TA 3000
3300(QNH≥1031HPA)
2700(QNH<979HPA)

1. RNAV1
2. GNSS REQUIRED
3. RADAR REQUIRED



1. **A** Departure altitude 520m for TUM-62X, TUM-64X, WXI-64X, DYN-62X.
2. **B** Climb gradient 5.3% for WXI-64X, TUM-64X.
3. **C** Climb gradient 4.3% for TUM-62X.



Changes: Nil.