

STANDARD DEPARTURE CHART-INSTRUMENT

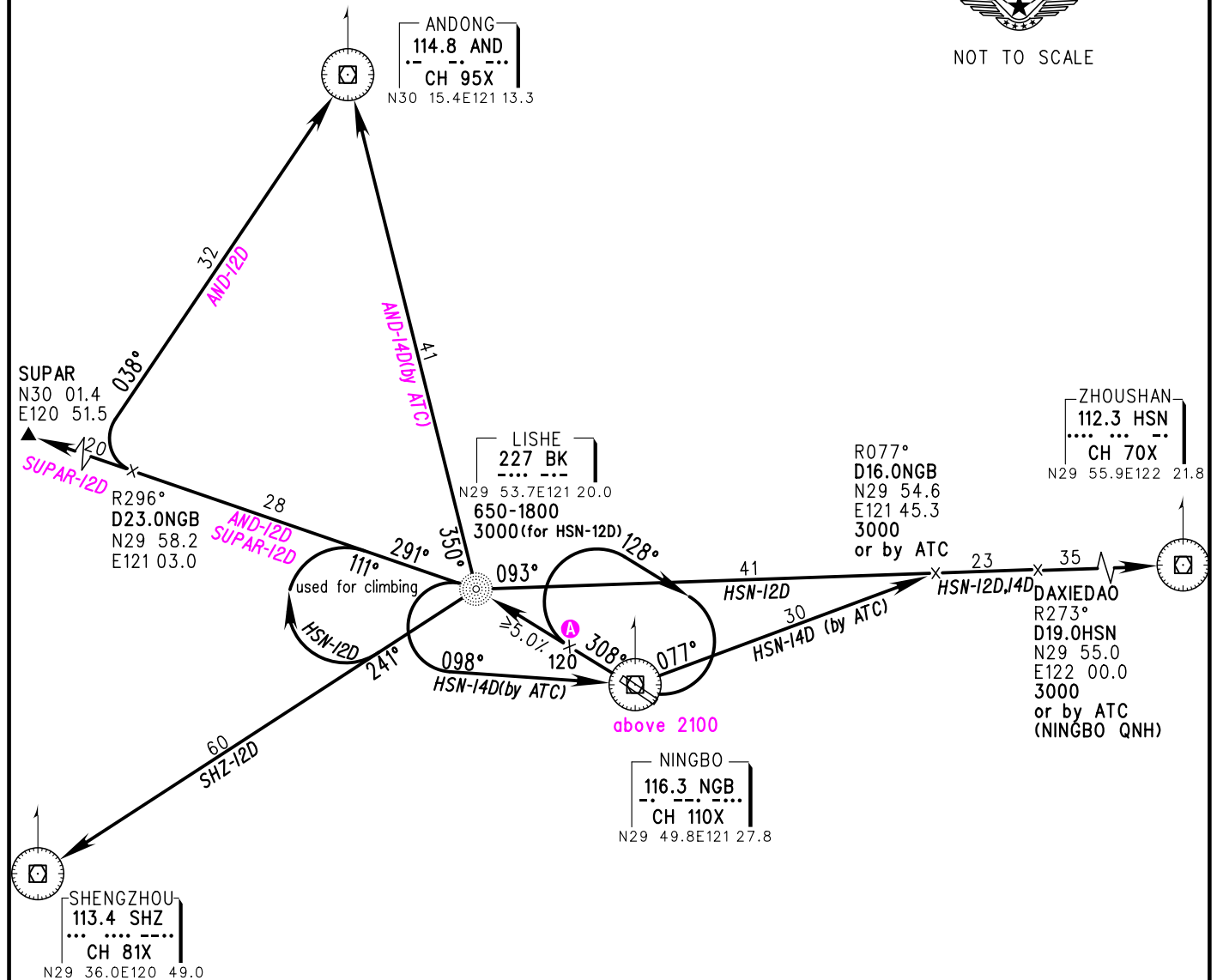
VAR 4° W

ATIS 126.45
TWR 118.35(118.7,130.0)

ZSNB NINGBO/Lishe
RWY 31

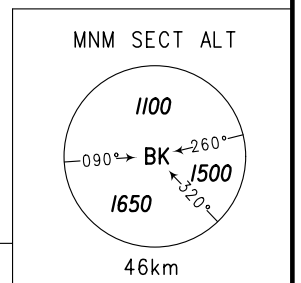
BEARINGS ARE MAGNETIC
ALTITUDES, ELEVATIONS
AND HEIGHTS IN METERS
DME DISTANCES IN
NAUTICAL MILES
DISTANCES IN KM

TL 3600
TA 3000
3300(QNH≥1031HPA)
2700(QNH≤979HPA)



Note:

1. (A) (Aircraft climbing gradient below 5.0%) Climb straight ahead to 120 with climb gradient 3.5% or more, turn right on track 128° to Abeam NGB, then turn right on track 308° to BK at 1200. Above procedure should be permitted by ATC before take-off.
2. Departure turn MAX IAS 350km/h.



Changes: Procedures.