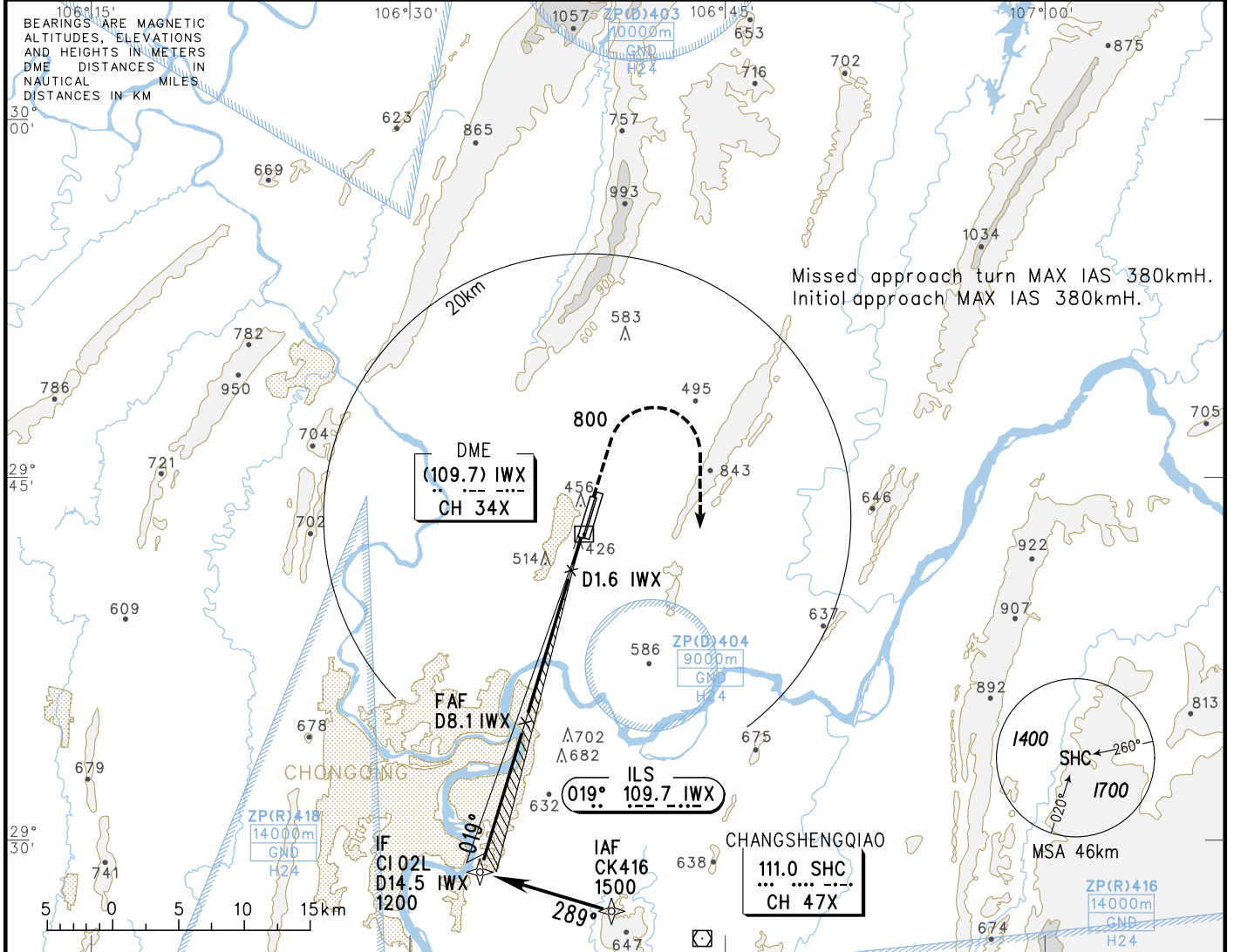


# INSTRUMENT APPROACH CHART-ICAO

D-ATIS 131.45  
 ATIS 126.4(ARR)  
 APP 125.2(119.55) AP01  
 120.85(119.55) AP02  
 119.1(124.2) AP03  
 AERODROME ELEV 416  
 HEIGHTS RELATED TO  
 VAR2°W THR RWY02L ELEV 412 TWR 118.2(118.65)

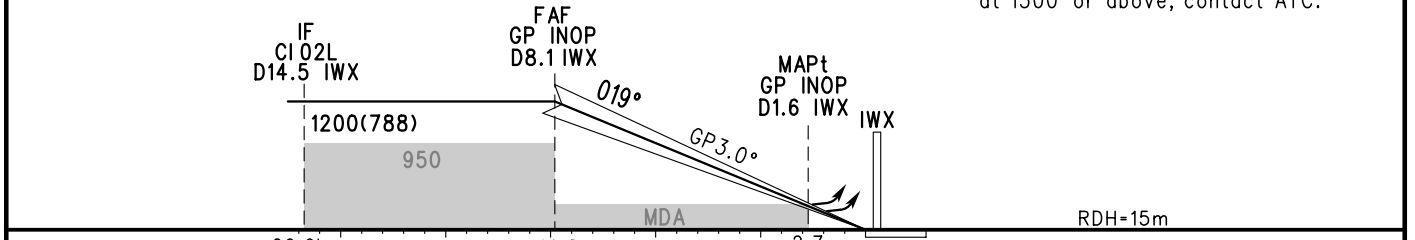
**ZUCK CHONGQING/Jiangbei**  
 RNAV ILS/DME RWY02L



GP INOP	DME (IWX) (NM)	8	7	6	5	4	3	2
	ALT (m)	1187	1090	993	896	799	702	605

TL 3600  
 TA 3000  
 3300(QNH≥1031HPA)  
 2700(QNH<979HPA)

**MISSED APPROACH**  
 Climb straight ahead to 800 with gradient ≥3%, then turn RIGHT to SHC at 1500 or above, contact ATC.



	A	B	C	D	FAF-MAPt(GP INOP) 12.1km							
ILS/DME DA(H) RVR/VIS	472(60) 550/800		477(65) 550/800		GS in kt	80	100	120	140	160	180	
GP INOP MDA(H) VIS	565(153) 2300				kmH	150	185	220	260	295	335	
CIRCLING MDA(H) VIS	610(194) 2900		970(554) 4400		970(554) 5000	Time min:sec	4:54	3:55	3:16	2:48	2:27	2:11
						Rate of descent m/s	2.2	2.7	3.2	3.8	4.3	4.9

Changes: New chart.