

STANDARD DEPARTURE CHART-INSTRUMENT

ZUCK CHONGQING/Jiangbei
RWY20L/R

VAR 2° W

RWY20L/R

BEARINGS ARE MAGNETIC
ALTITUDES, ELEVATIONS
AND HEIGHTS IN METERS
DME DISTANCES IN
NAUTICAL MILES
DISTANCES IN KM

D-ATIS 131.45
ATIS 126.65(DEP)
TWR 118.2(118.65)

APP 125.2(119.55) AP01
120.85(119.55) AP02
119.1(124.2) AP03

TL 3600
TA 3000
3300(QNH ≥ 1031HPA)
2700(QNH < 979HPA)

NANCHONG
117.4 GAO
CH 121X
N30 48.6E106 11.3

TONGJINGCHANG
241 OS
N29 51.1E106 50.8

FULING
114.0 FLG
CH 87X
N29 42.0E107 22.7

CHANGSHENGQIAO
111.0 SHC
CH 47X
N29 25.9E106 43.7

APUKI
N28 09.6
E106 42.2

OTLEK
N28 11.3
E107 26.4

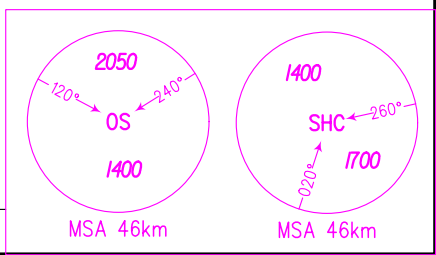
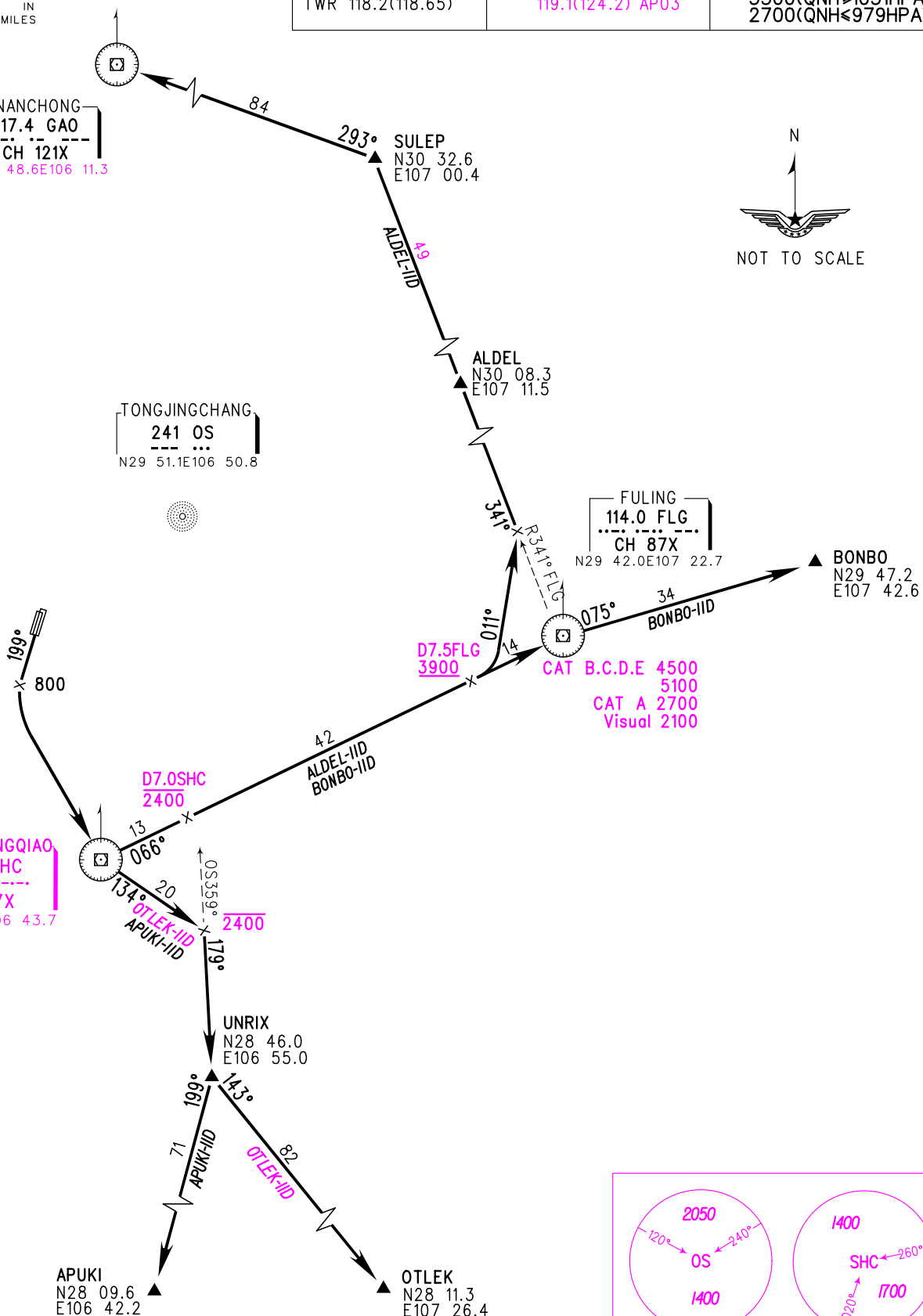
UNRIX
N28 46.0
E106 55.0

BONBO
N29 47.2
E107 42.6

SULEP
N30 32.6
E107 00.4

ALDEL
N30 08.3
E107 11.5

D7.5FLG
3900
CAT B.C.D.E 4500
5100
CAT A 2700
Visual 2100



Changes: Procedures, AP03.