

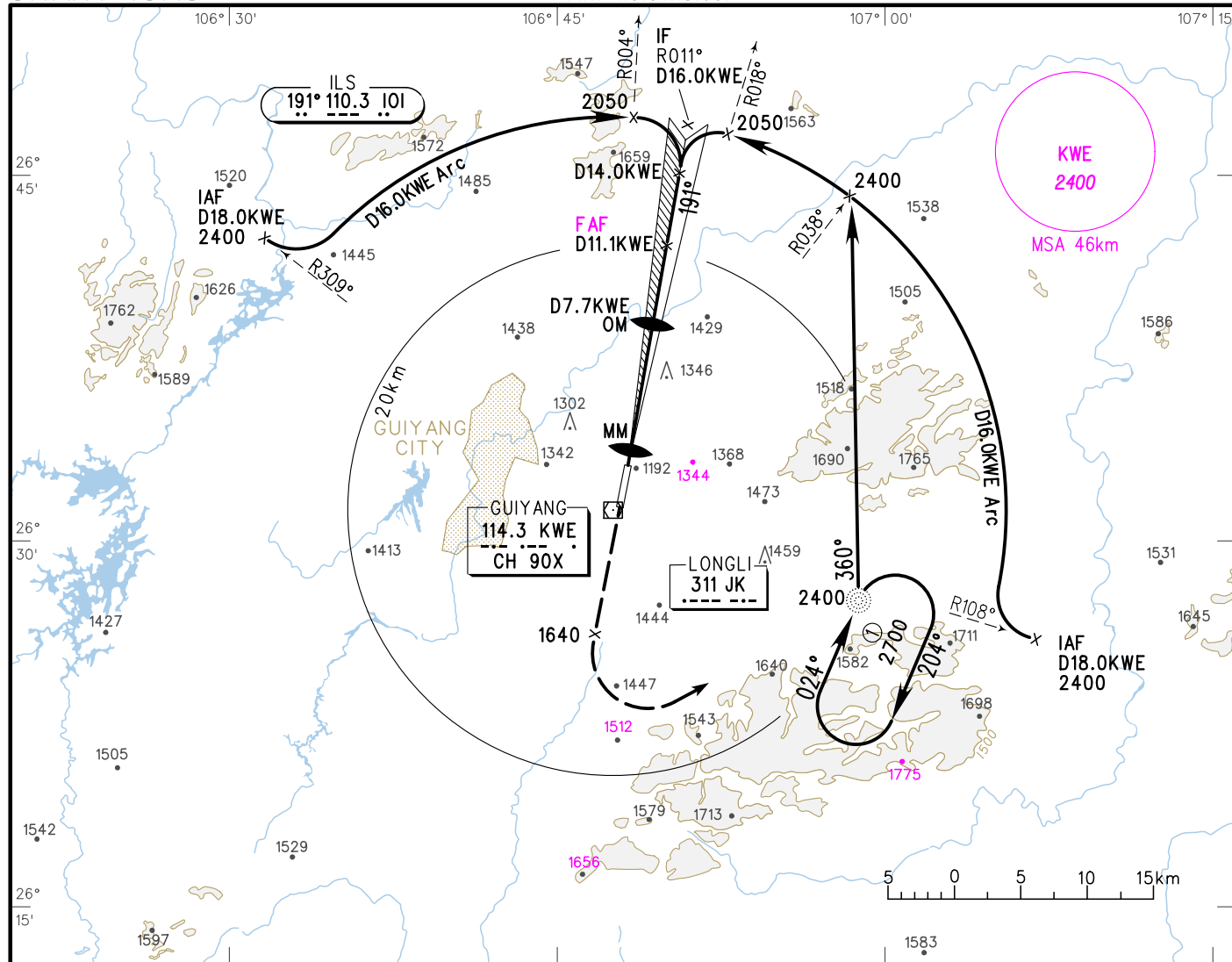
INSTRUMENT APPROACH CHART-ICAO

VAR1° W

AERODROME ELEV 1139 ATIS 127.05
 HEIGHTS RELATED TO APP 126.05(119.45)
 THR RWY19 ELEV 1137 TWR 118.3(118.05)

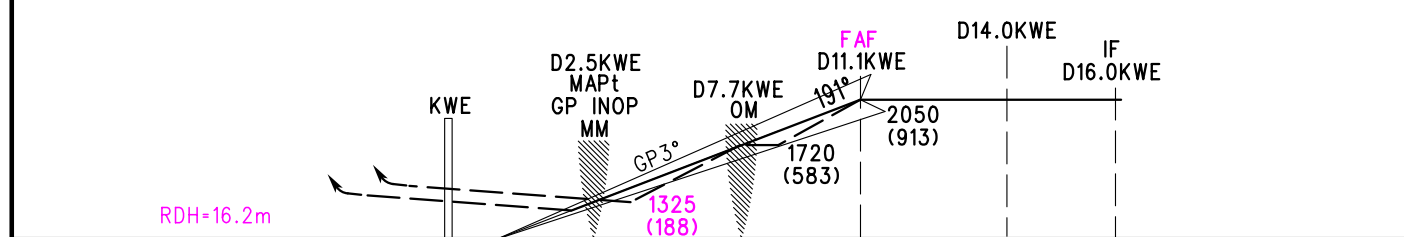
ZUGY GUIYANG/Longdongbao

ILS/DME RWY19



GP INOP	DME (KWE) (NM)	4	5	6	7	8	9	10	11
	ALT (m)	1357	1453	1550	1646	1742	1838	1934	2030

MISSED APPROACH
 Climb straight ahead to 1640, turn LEFT to JK at 2400, contact ATC.
 TL 3600
 TA 3000
 3300(QNH≥1031HPA)
 2700(QNH≤979HPA)



	A	B	C	D	FAF-MAPT(GP INOP) 15.95km						
ILS/DME DA(H) RVR/VIS	1197(60) 550/800		1202(65) 550/800	1207(70) 550/800	GS in kt	80	100	120	140	160	180
					kmH	150	185	220	260	295	335
GP INOP MDA(H) VIS	1325(188) 2700				Time min:sec	6:28	5:10	4:18	3:41	3:14	2:52
					Rate of descent m/s	2.2	2.7	3.2	3.8	4.3	4.9
CIRCLING MDA(H) VIS	1379(240) 3100		1569(430) 4400	1569(430) 5000	Changes: MSA, conversion table, RDH, FAF, new obstacle.						