

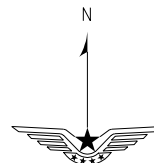
STANDARD DEPARTURE
CHART-INSTRUMENT

VAR1° W
ATIS 127.05
APP 126.05(119.45)
TWR 118.3(118.05)

ZUGY GUIYANG/Longdongbao
RWY19

BEARINGS ARE MAGNETIC
ALTITUDES, ELEVATIONS
AND HEIGHTS IN METERS
DME DISTANCES IN
NAUTICAL MILES
DISTANCES IN KM

TL 3600
TA 3000
3300(QNH>1031HPA)
2700(QNH<979HPA)



NOT TO SCALE

QIANXI
113.1 QNX
CH 78X
N27 02.5E106 01.8



GUIYANG
114.3 KWE
CH 90X
N26 31.4E106 47.7

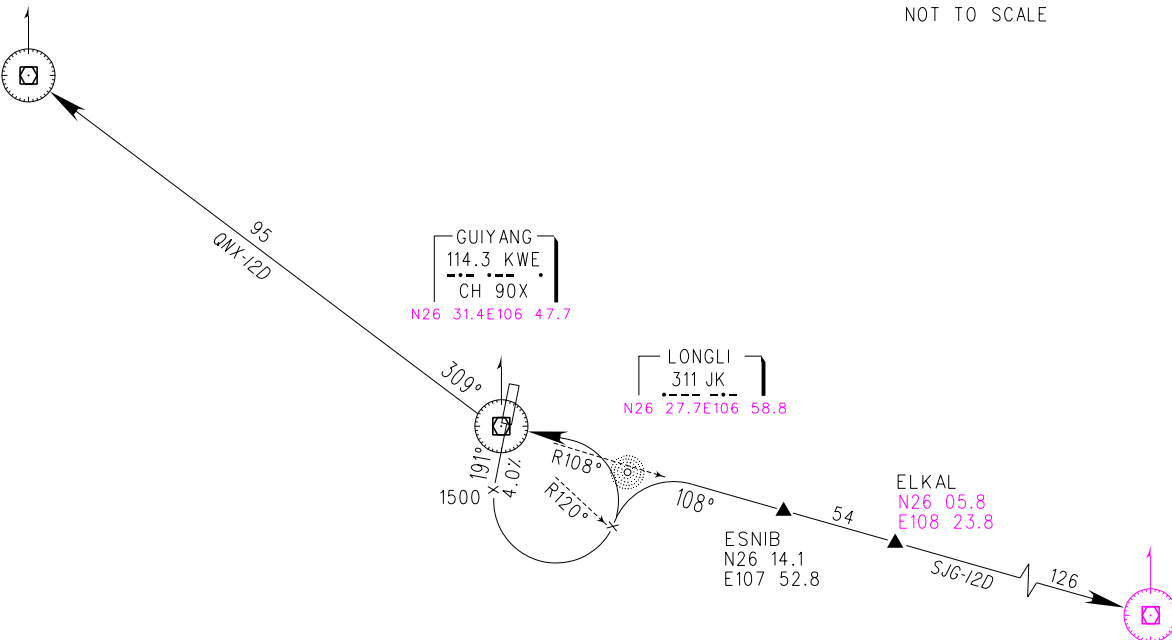
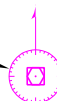


LONGLI
311 JK
N26 27.7E106 58.8

ESNIB
N26 14.1
E107 52.8

ELKAL
N26 05.8
E108 23.8

SANJIANG
116.8 SJG
CH 115X
N25 46.6E109 36.6



Note: The procedure can only be used by aircraft with climb gradient more than 4.0% and pilot shall obtain ATC permission before start-up.

Changes: 'RO' withdrawn, coordinates of 'KWE', 'JK', 'SJG', 'ELKAL'.

