

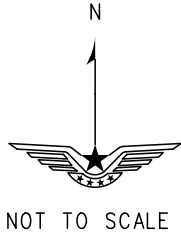
# STANDARD DEPARTURE CHART-INSTRUMENT

ZUUU CHENGDU/Shuangliu RWY02R

VAR2° W

BEARINGS ARE MAGNETIC, ALTITUDES, ELEVATIONS AND HEIGHTS IN METERS, DME DISTANCES IN NAUTICAL MILES, DISTANCES IN KM.

ATIS 128.6	APP 124.85(127.7) AP01
D-ATIS 131.45	119.7(127.7) AP02
TWR 130.35(118.85)	119.25(127.7) AP03



TL 3600  
TA 3000  
3300(QNH≥1031HPA)  
2700(QNH≤979HPA)

JINTANG  
115.4 JTG  
CH 101X  
N30 52.3E104 23.4  
3300/3900 CAT C.D.E  
2700 CAT B  
1500/2100 CAT A

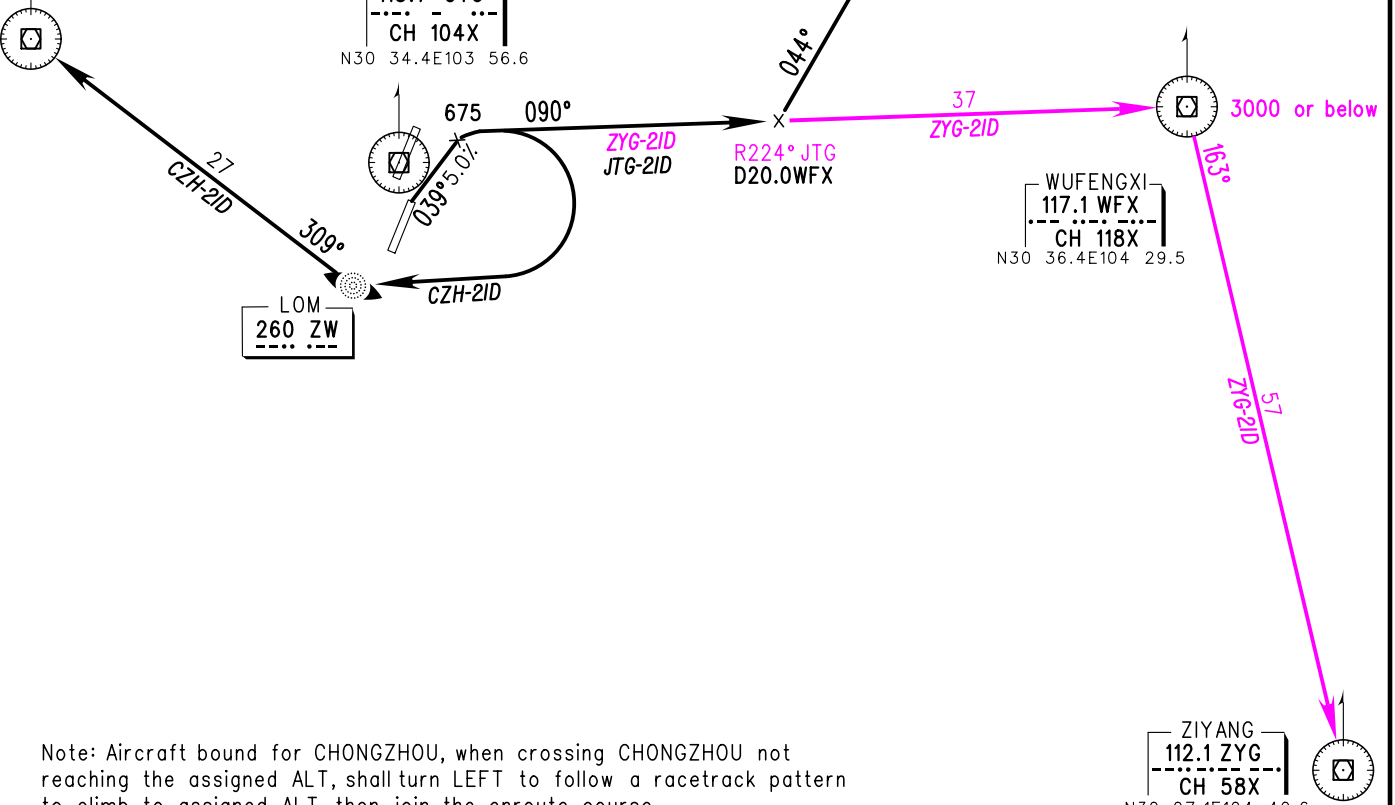
CHONGZHOU  
114.5 CZH  
CH 92X  
N30 38.7E103 41.2  
4800/5400/6000

SHUANGLIU  
115.7 CTU  
CH 104X  
N30 34.4E103 56.6

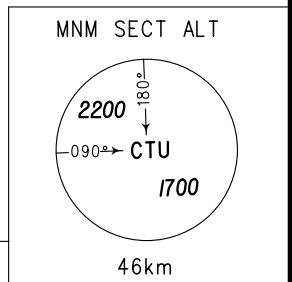
WUFENGXI  
117.1 WFX  
CH 118X  
N30 36.4E104 29.5

ZIYANG  
112.1 ZYG  
CH 58X  
N30 07.1E104 40.6

3900/4500/5100 CAT C.D.E  
2700/3300 CAT B  
1500/2100 CAT A



Note: Aircraft bound for CHONGZHOU, when crossing CHONGZHOU not reaching the assigned ALT, shall turn LEFT to follow a racetrack pattern to climb to assigned ALT, then join the enroute course.



Changes: ZYG-2ID, frequency.