

# STANDARD DEPARTURE CHART-INSTRUMENT

VAR2° W

TWR 130.0(118.2)

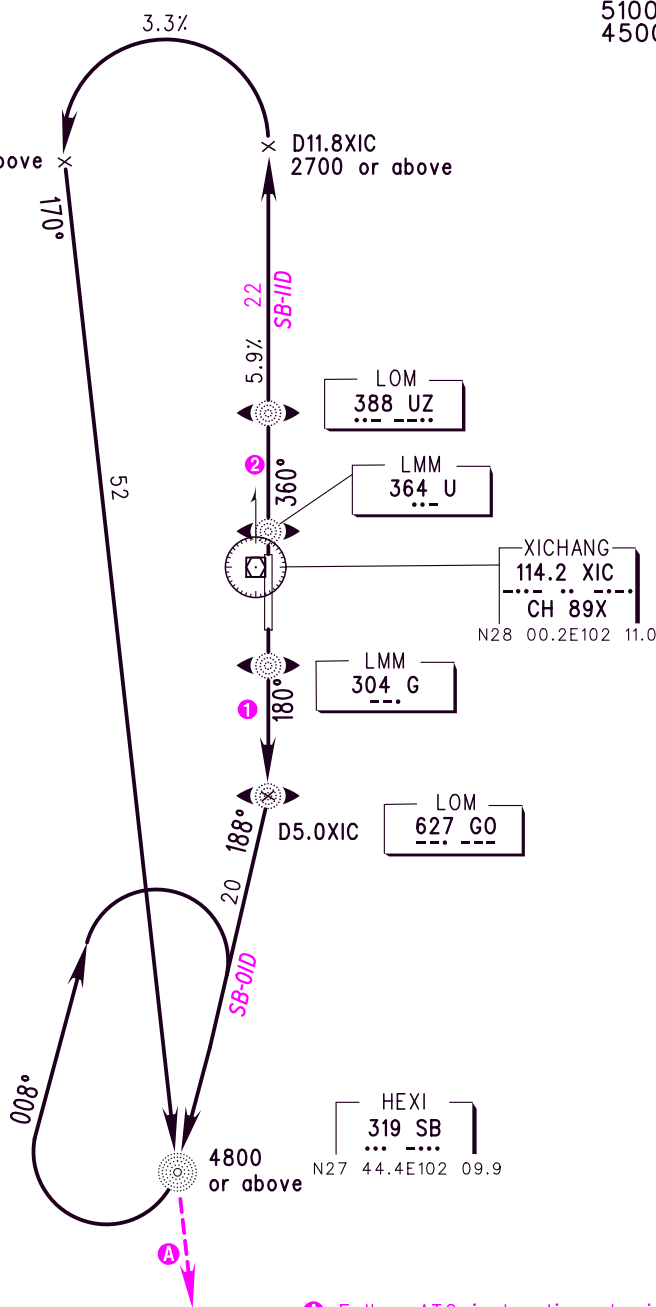
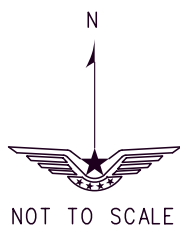
ZUXC XICHANG/Qingshan

RWY18/36

BEARINGS ARE MAGNETIC  
ALTITUDES, ELEVATIONS  
AND HEIGHTS IN METERS  
DME DISTANCES IN  
NAUTICAL MILES  
DISTANCES IN KM

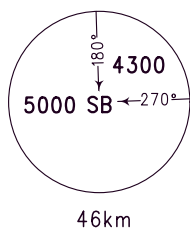
TL 5400  
TA 4800  
5100(QNH≥1031HPA)  
4500(QNH≤979HPA)

Departure turn MAX IAS 350kmH



A Follow ATC instructions to join the route.

MNM SECT ALT



1 RWY18 (SB-01D)

Climb straight ahead to LOM'GO'(or to D5.0XIC), turn RIGHT and along track 188° to SB, join the holding pattern to climb to 4800 or above, then follow ATC instructions to join the route.

2 RWY36 (SB-11D)

Climb straight (with gradient≥5.9%) to D11.8XIC, with ALT 2700m or above, turn LEFT (climb with gradient≥3.3%) and climb along track 170° to SB, with ALT 4800m or above, then follow ATC instructions to join the route.

Changes: Procedures.