

# STANDARD DEPARTURE CHART-INSTRUMENT

VAR3°E

ATIS 126.7  
**D-ATIS 131.45**  
 APP 120.25(119.9)/AP01  
 126.05(119.9)/AP02  
 TWR 118.1(125.0)

ZWWW URUMQI/Diwopu  
 RWY07

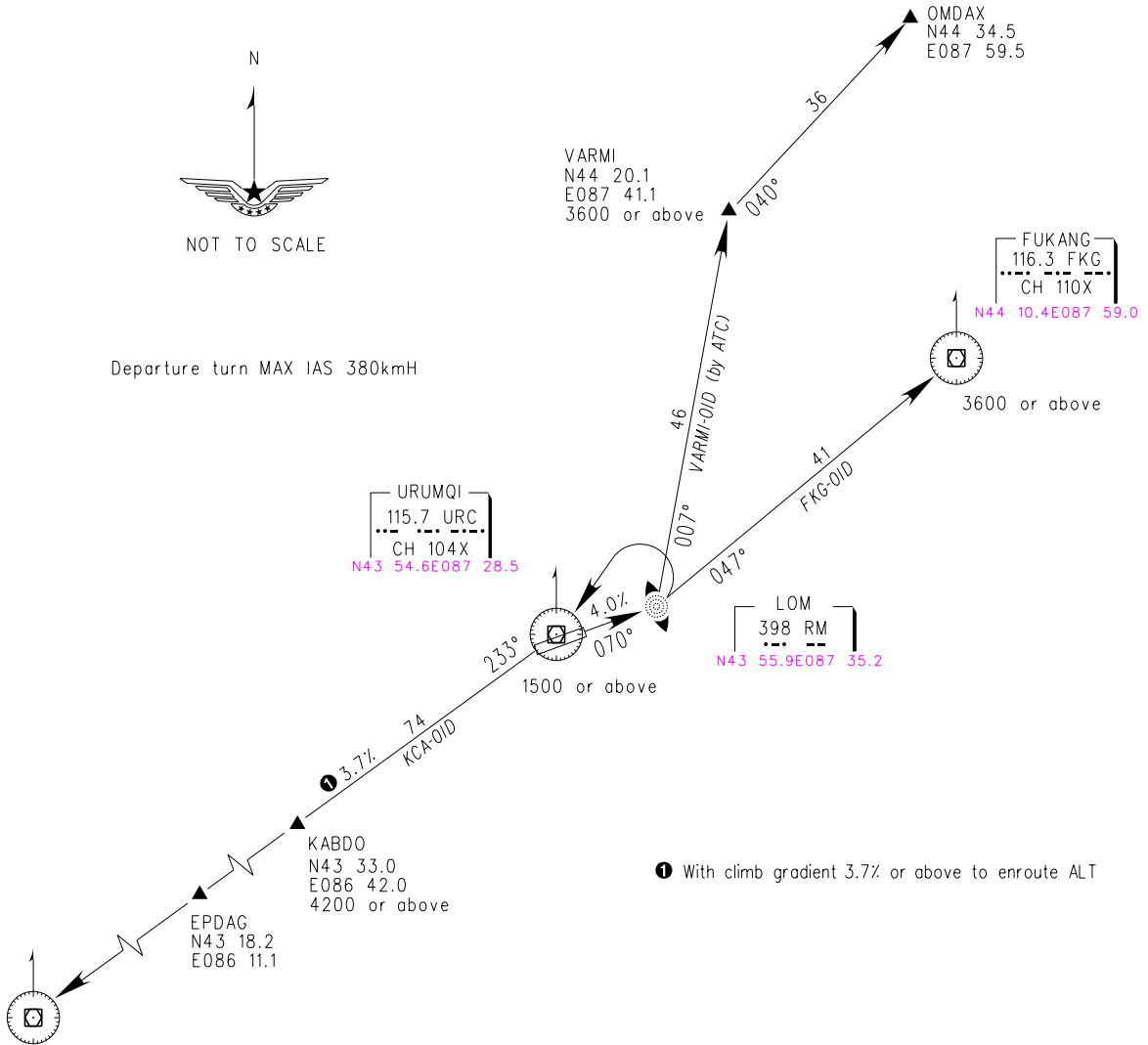
BEARINGS ARE MAGNETIC  
 ALTITUDES, ELEVATIONS  
 AND HEIGHTS IN METERS  
 DME DISTANCES IN  
 NAUTICAL MILES  
 DISTANCES IN KM

TL 3600  
 TA 3000  
 3300(QNH≥1031HPA)  
 2700(QNH≤979HPA)



NOT TO SCALE

Departure turn MAX IAS 380kmH



① With climb gradient 3.7% or above to enroute ALT

Changes: D-ATIS, coordinates of 'FKG', 'RM', 'URC', 'KCA'.

