

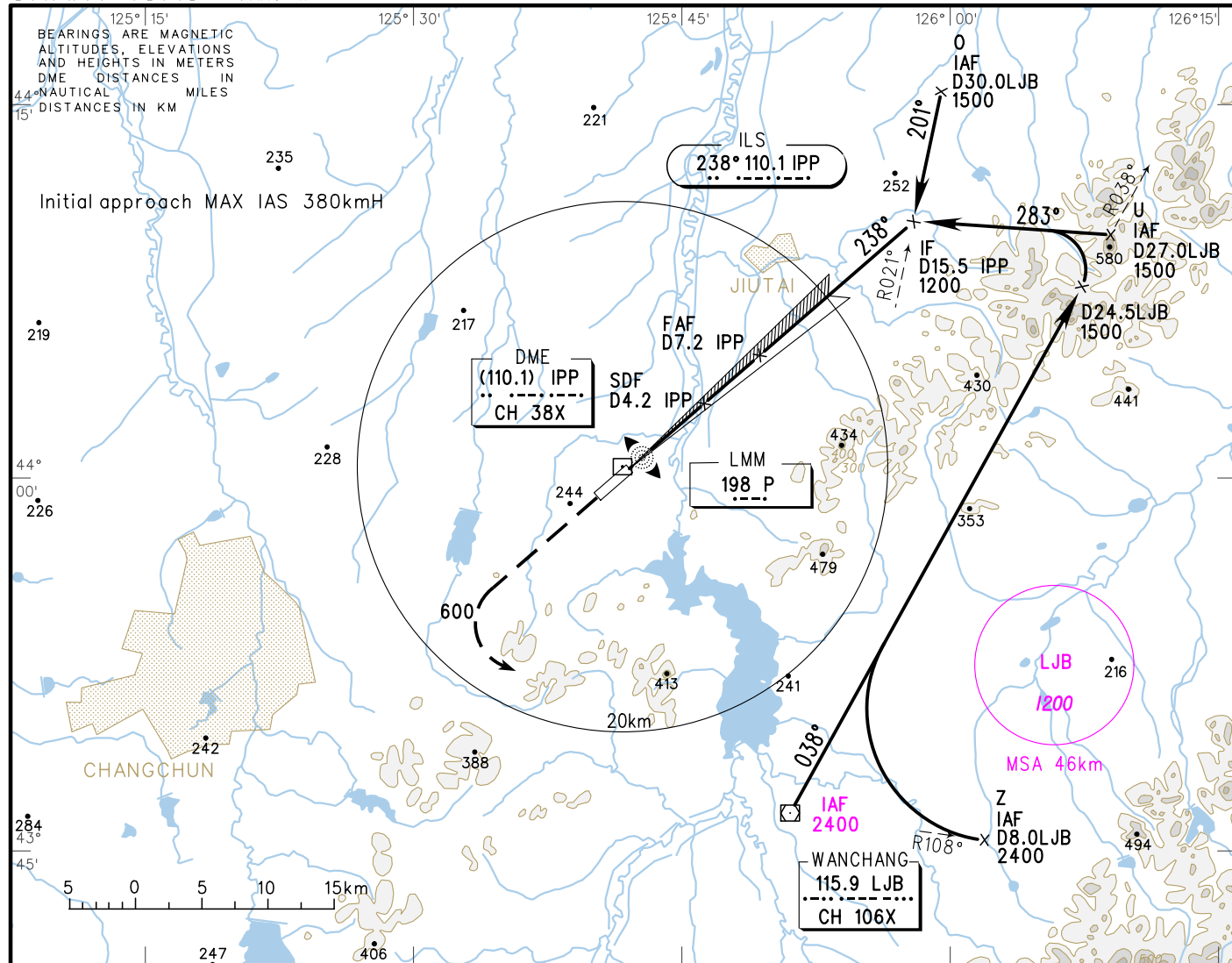
INSTRUMENT APPROACH CHART-ICAO

VAR 9° W

AERODROME ELEV 215
HEIGHTS RELATED TO THR RWY24 ELEV 197

ATIS 126.25
APP 119.45(125.25)
TWR 118.85(124.35)

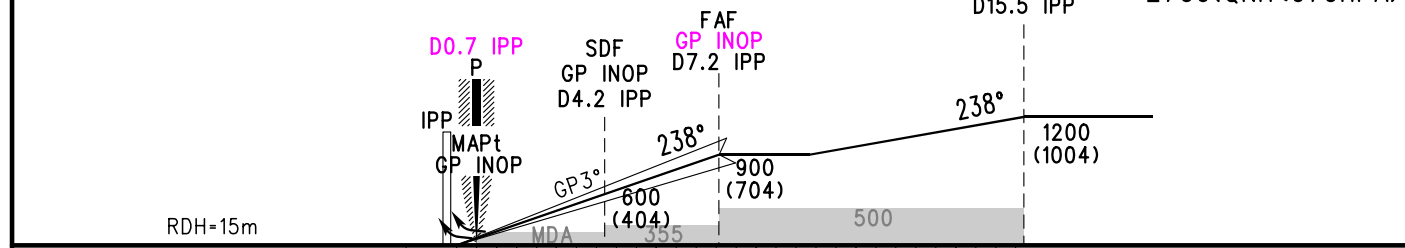
ZYCC CHANGCHUN/Longjia
ILS/DME RWY24



GP INOP	DME (IPP) (NM)	2	3	4	5	6	7	8	9
	ALT (m)	391	488	585	682	779	876		

MISSED APPROACH
Climb straight ahead to 600, turn LEFT to LJB at 1500, contact ATC.

TL 3600
TA 3000
3300(QNH≥1031HPA)
2700(QNH≤979HPA)



		A	B	C	D	FAF-MAPt(GP INOP) 12.0km							
ILS/DME ^{DA(H)} _{RVR/VIS}	A	257(60) 800		262(65) 800		GS in kt	80	100	120	140	160	180	
	B	272(75) 800		277(80) 800	282(85) 800	Time min:sec	4:52	3:53	3:14	2:47	2:26	2:10	
GP INOP ^{MDA(H)} _{VIS}		300(103) 1100		300(103) 1200		Rate of descent m/s	2.2	2.7	3.2	3.8	4.3	4.9	
CIRCLING ^{MDA(H)} _{VIS}		380(165) 2300	390(175) 2300	475(260) 4000	505(290) 4400	Note: Missed APCH climb gradient A 4.0%, B 2.5%. Changes: Procedure adjusted, Conversion table, MSA.							