

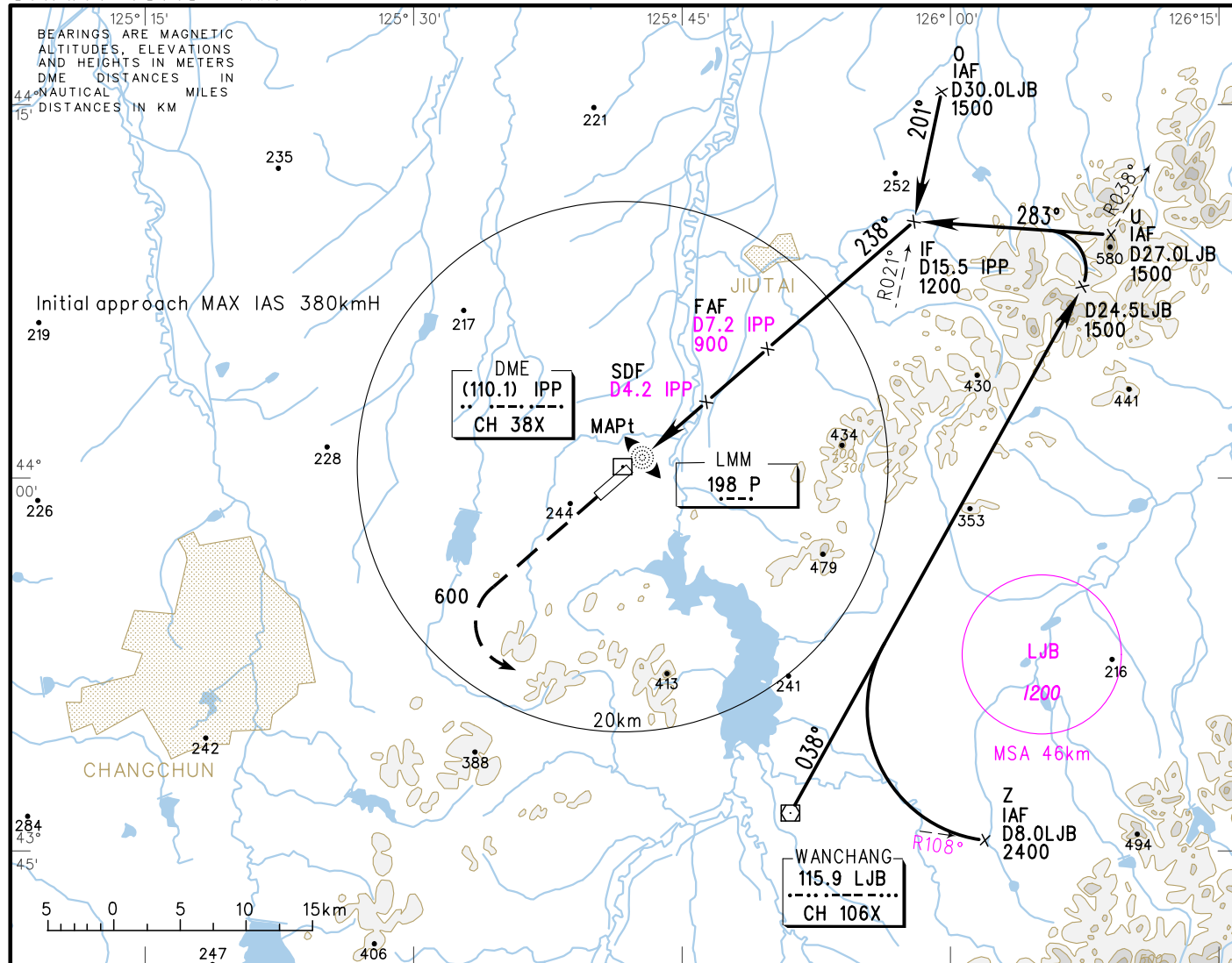
# INSTRUMENT APPROACH CHART-ICAO

VAR9° W

AERODROME ELEV 215  
HEIGHTS RELATED TO THR RWY24 ELEV 197

ATIS 126.25  
APP 119.45(125.25)  
TWR 118.85(124.35)

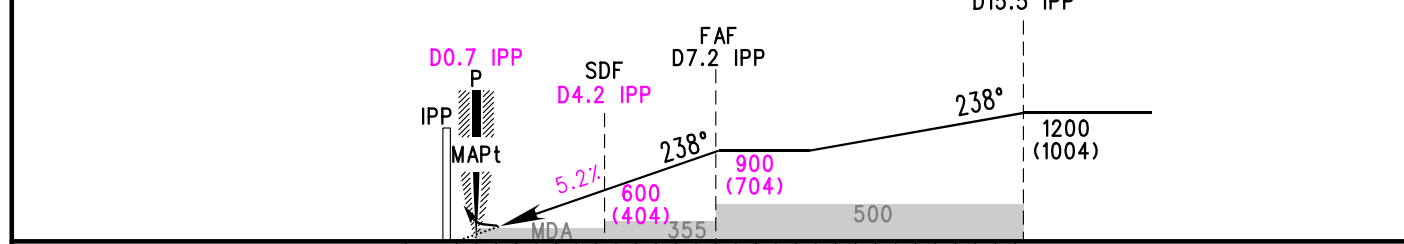
**ZYCC CHANGCHUN/Longjia**  
NDB/DME RWY24



|                |     |     |     |     |     |     |   |   |
|----------------|-----|-----|-----|-----|-----|-----|---|---|
| DME (IPP) (NM) | 2   | 3   | 4   | 5   | 6   | 7   | 8 | 9 |
| ALT (m)        | 391 | 488 | 585 | 682 | 779 | 876 |   |   |

**MISSED APPROACH**  
Climb straight ahead to 600, turn LEFT to LJB at 1500, contact ATC.

TL 3600  
TA 3000  
3300(QNH≥1031HPA)  
2700(QNH≤979HPA)



| NDB/DME             | FAF-MAPt 12.0km  |                  |                  |                  |                     |      |      |      |      |      |      |
|---------------------|------------------|------------------|------------------|------------------|---------------------|------|------|------|------|------|------|
|                     | A                | B                | C                | D                | GS in kt            | 100  | 120  | 140  | 160  | 180  |      |
| DA(H) VIS           | 300(103)<br>1200 |                  |                  |                  | 80                  | 100  | 120  | 140  | 160  | 180  |      |
| CIRCLING MDA(H) VIS | 380(165)<br>2300 | 390(175)<br>2300 | 475(260)<br>4000 | 505(290)<br>4400 | 150                 | 185  | 220  | 260  | 295  | 335  |      |
|                     |                  |                  |                  |                  | Time min:sec        | 4:52 | 3:53 | 3:14 | 2:47 | 2:26 | 2:10 |
|                     |                  |                  |                  |                  | Rate of descent m/s | 2.2  | 2.7  | 3.2  | 3.8  | 4.3  | 4.8  |

*Changes: Procedure adjusted, Conversion table, MSA.*