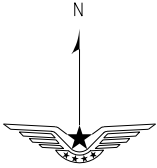


STANDARD DEPARTURE  
CHART-INSTRUMENT

VAR9°W  
TL 3600  
TA 3000  
3300(QNH≥1031HPA)  
2700(QNH≤979HPA)

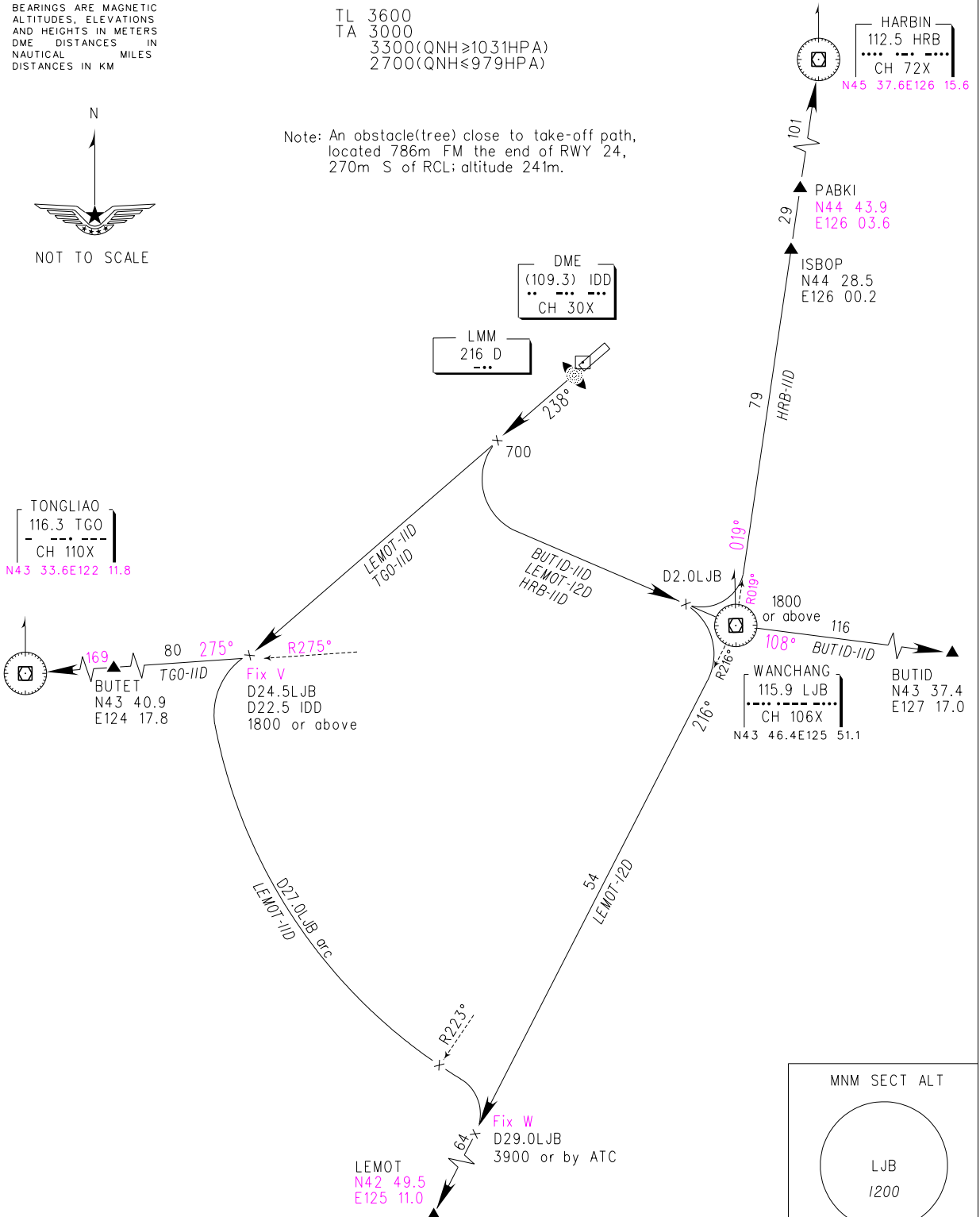
ZYCC CHANGCHUN/Longjia  
RWY24

BEARINGS ARE MAGNETIC  
ALTITUDES, ELEVATIONS  
AND HEIGHTS IN METERS  
DME DISTANCES IN  
NAUTICAL MILES  
DISTANCES IN KM



NOT TO SCALE

Note: An obstacle (tree) close to take-off path,  
located 786m FM the end of RWY 24,  
270m S of RCL; altitude 241m.



Changes: Coordinates of 'HRB', 'TGO', LEMOT, PABKI, departure course angle.

