

STANDARD DEPARTURE CHART-INSTRUMENT

VAR9°W
 ATIS 126.25
 APP 119.45(125.25)
 TWR 118.85(124.35)

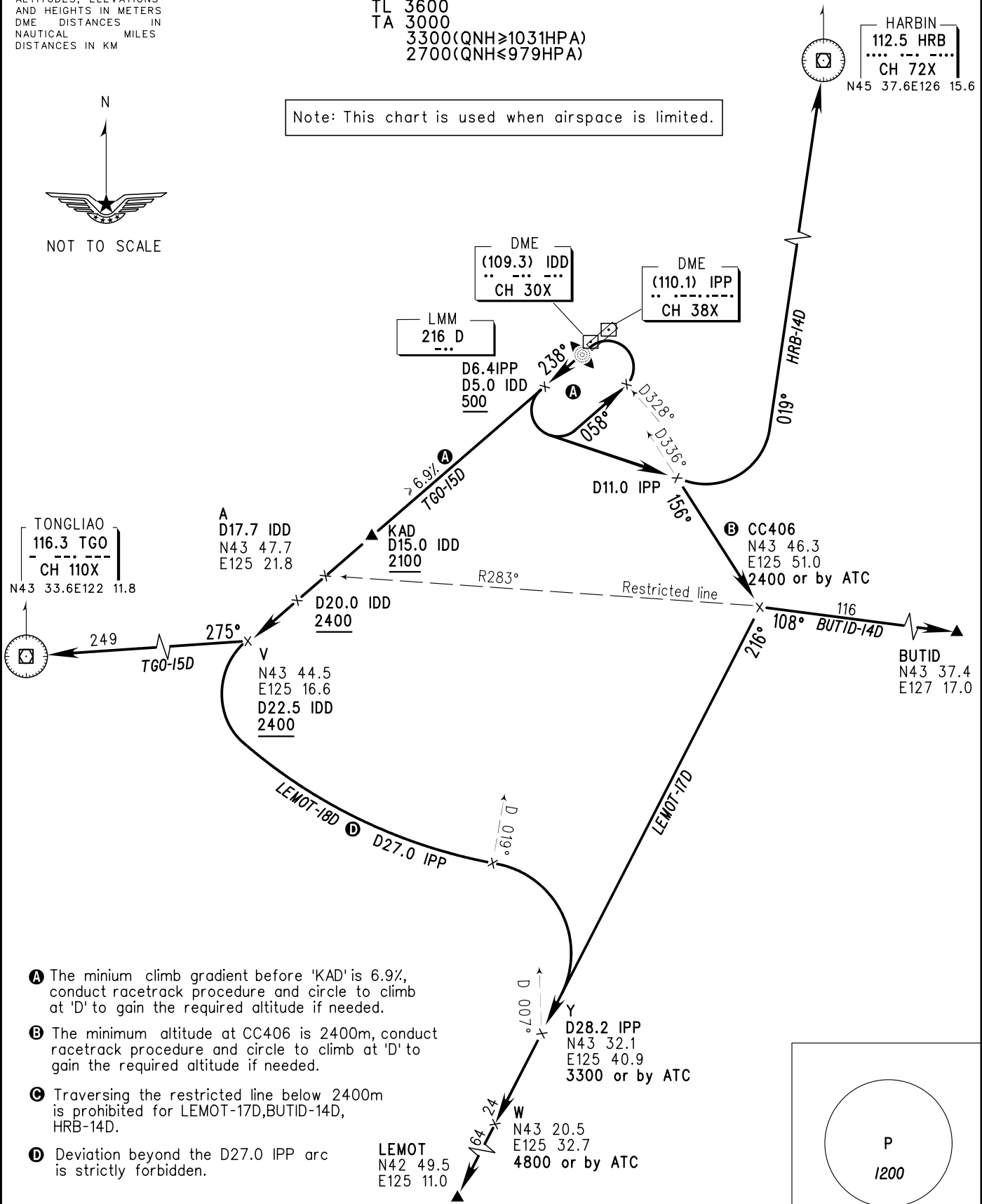
ZYCC CHANGCHUN/Longjia
 NDB RWY24

BEARINGS ARE MAGNETIC
 ALTITUDES, ELEVATIONS
 AND HEIGHTS IN METERS
 DME DISTANCES IN
 NAUTICAL MILES
 DISTANCES IN KM

TL 3600
 TA 3000
 3300(QNH≥1031HPA)
 2700(QNH≤979HPA)

HARBIN
 112.5 HRB
 CH 72X
 N45 37.6E126 15.6

Note: This chart is used when airspace is limited.

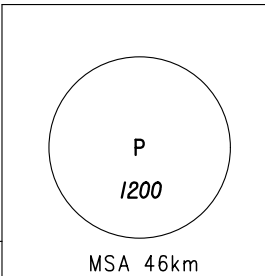


- A** The minimum climb gradient before 'KAD' is 6.9%, conduct racetrack procedure and circle to climb at 'D' to gain the required altitude if needed.
- B** The minimum altitude at CC406 is 2400m, conduct racetrack procedure and circle to climb at 'D' to gain the required altitude if needed.
- C** Traversing the restricted line below 2400m is prohibited for LEMOT-17D, BUTID-14D, HRB-14D.
- D** Deviation beyond the D27.0 IPP arc is strictly forbidden.

LEMOT
 N42 49.5
 E125 11.0

Y
 D28.2 IPP
 N43 32.1
 E125 40.9
 3300 or by ATC

W
 N43 20.5
 E125 32.7
 4800 or by ATC



Changes: New chart.