

STANDARD DEPARTURE CHART-INSTRUMENT

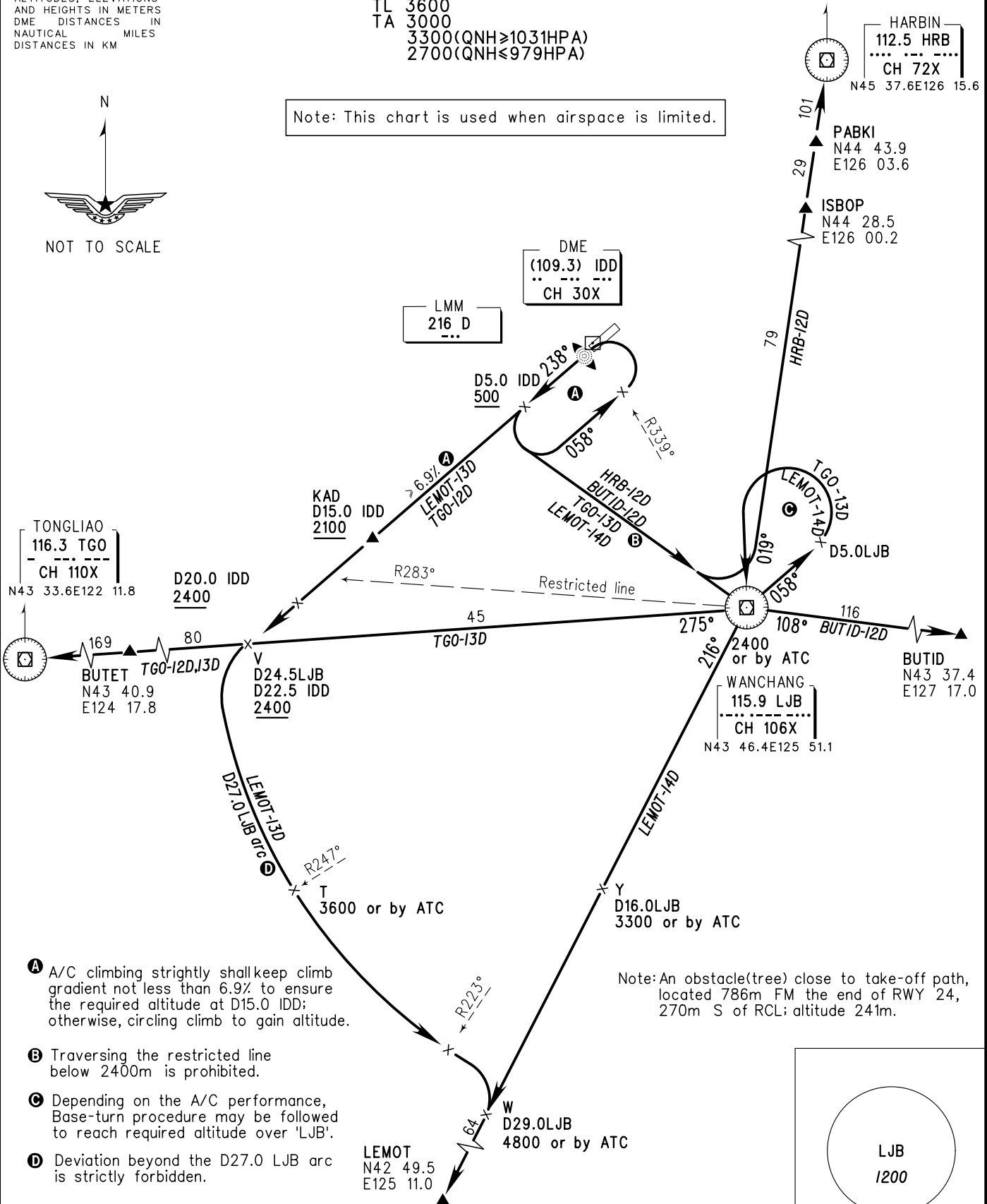
VAR9° W
 ATIS 126.25
 APP 119.45(125.25)
 TWR 118.85(124.35)

ZYCC CHANGCHUN/Longjia
 RWY24

BEARINGS ARE MAGNETIC
 ALTITUDES, ELEVATIONS
 AND HEIGHTS IN METERS
 DME DISTANCES IN
 NAUTICAL MILES
 DISTANCES IN KM

TL 3600
 TA 3000
 3300(QNH≥1031HPA)
 2700(QNH≤979HPA)

Note: This chart is used when airspace is limited.



Changes: Chart renamed.

