

# STANDARD ARRIVAL CHART-INSTRUMENT

VAR9°W

ATIS 126.25  
APP 119.45(125.25)  
TWR 118.85(124.35)

ZYCC CHANGCHUN/Longjia  
NDB RWY06

BEARINGS ARE MAGNETIC  
ALTITUDES, ELEVATIONS  
AND HEIGHTS IN METERS  
DME DISTANCES IN  
NAUTICAL MILES  
DISTANCES IN KM

TL 3600  
TA 3000  
3300(QNH≥1031HPA)  
2700(QNH≤979HPA)

HARBIN  
112.5 HRB  
CH 72X  
N45 37.6E126 15.6

Note: This chart is used when airspace is limited.



NOT TO SCALE

Arrival turn MAX IAS 380kmH

LMM  
216 D  
---

DME  
(109.3) IDD  
CH 30X

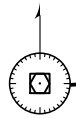
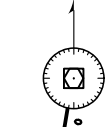
TONGLIAO  
116.3 TGO  
CH 110X  
N43 33.6E122 11.8

V  
D22.5 IDD  
N43 44.5  
E125 16.6  
2400

CC507  
D31.2 IDD  
N43 29.8  
E125 26.5  
3600 or by ATC

W  
N43 20.5  
E125 32.7  
4800 or by ATC

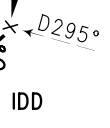
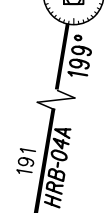
LEMOT  
N42 49.5  
E125 11.0



249  
095° TGO-04,05A

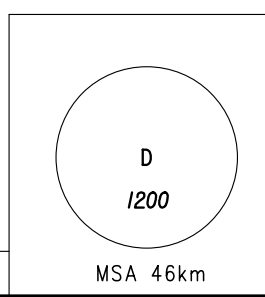
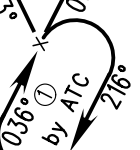
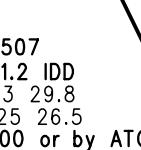
D20.0 IDD  
2400

KAD  
D15.0 IDD  
2100



CC406  
N43 46.3  
E125 51.0  
2400 or by ATC

BUTID  
N43 37.4  
E127 17.0



Changes: New chart.