

STANDARD DEPARTURE
CHART - INSTRUMENT

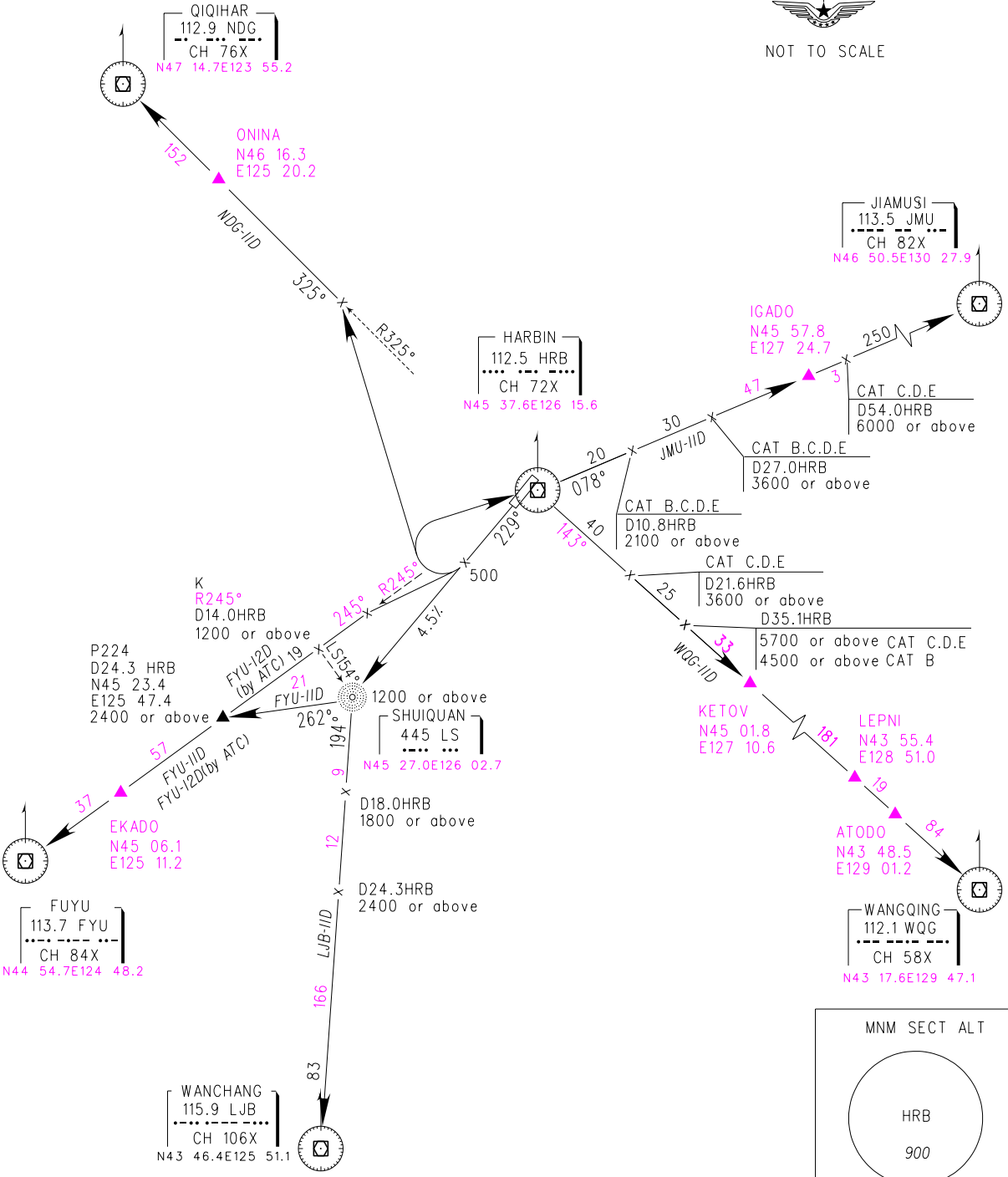
VAR10° W

ATIS 127.4
APP 119.65(127.75)
TWR 118.7(118.1)

ZYHB HARBIN/Taiping
VOR RWY23

BEARINGS ARE MAGNETIC
ALTITUDES, ELEVATIONS
AND HEIGHTS IN METERS
DME DISTANCES IN
NAUTICAL MILES
DISTANCES IN KM

TL 3600
TA 3000
3300(QNH≥1031HPA)
2700(QNH≤979HPA)



Changes: Coordinates of 'FUYU', 'LS', 'HRB', 'WQG', 'JMU' and 'NDG'.

