

# INSTRUMENT APPROACH CHART-ICAO

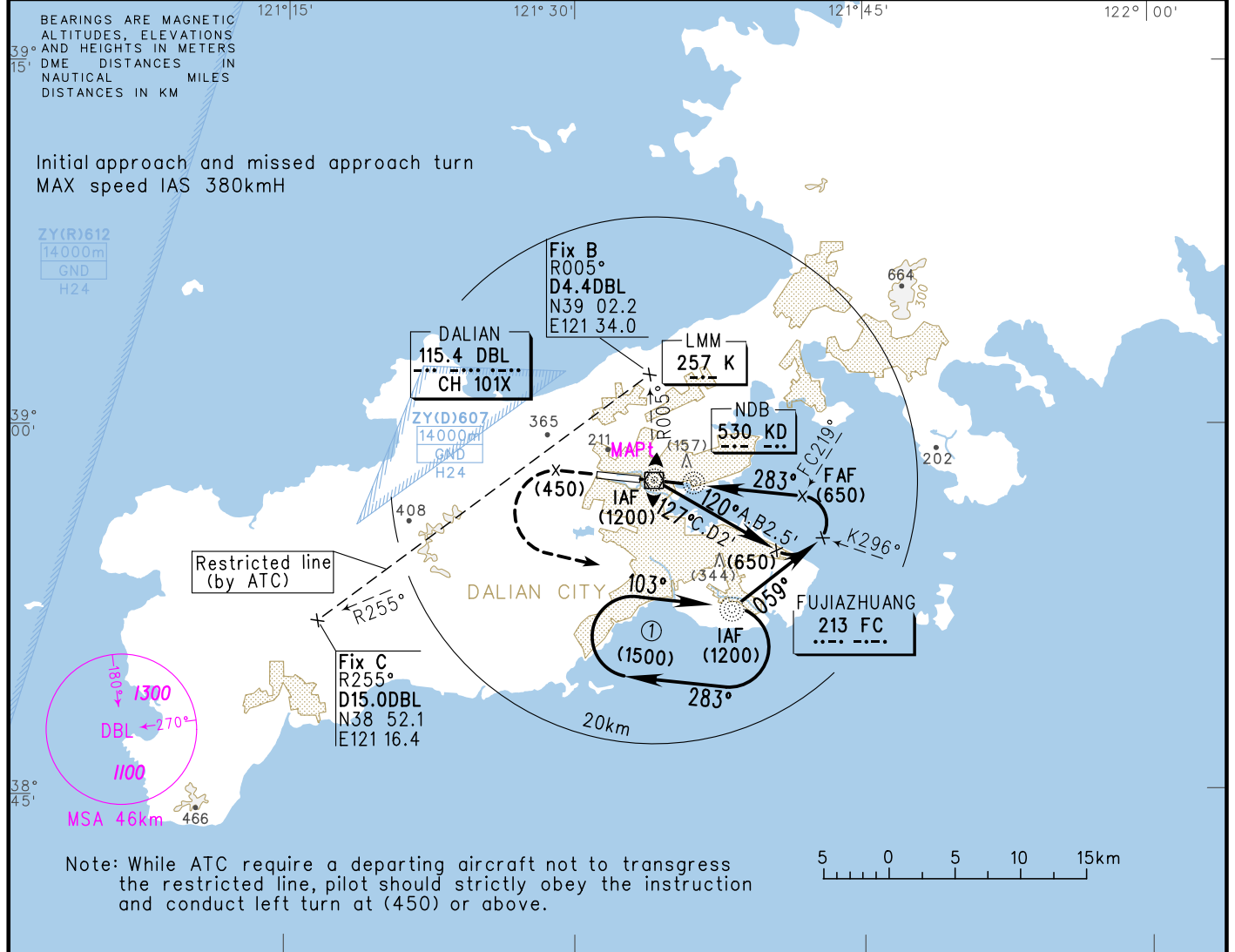
VAR7° W

AERODROME ELEV 33  
HEIGHTS RELATED TO  
THR RWY28 ELEV 26

ATIS 126.65  
D-ATIS 131.45  
APP 123.85(127.95)  
TWR 118.25(118.85)

## ZYTL DALIAN/Zhoushuizi

NDB RWY28



DME ( ) (NM)	1	2	3	4	5	6	7	8
HGT (m)								

**MISSED APPROACH**  
Climb straight ahead to (450),  
turn LEFT inbound to FC at  
(900), contact ATC.

TL  
TH by ATC

THR DISPLACED 100m

MAPt K

KD

FAF (650)

283°

5.2%

DIST to displaced THR 12.1km

					FAF-MAPt 11km							
					GS in	kt	80	100	120	140	160	180
NDB (MDH) VIS	A	B	C	D	kt <td>150</td> <td>185</td> <td>220</td> <td>260</td> <td>295</td> <td>335</td>	150	185	220	260	295	335	
	(240)	(240)	(240)	(240)	Time min:sec	4:27	3:34	2:58	2:33	2:14	1:59	
CIRCLING (MDH) VIS	A	B	C	D	Rate of descent m/s	2.2	2.7	3.2	3.8	4.3	4.8	
	(450)	(450)	(480)	(480)	Changes: Conversion table, MSA.							