

# STANDARD DEPARTURE CHART-INSTRUMENT

VAR 7° W

ATIS 126.65  
D-ATIS 131.45  
APP 123.85(127.95)  
TWR 118.25(118.85)

ZYTL DALIAN/Zhoushuizi  
RWY28

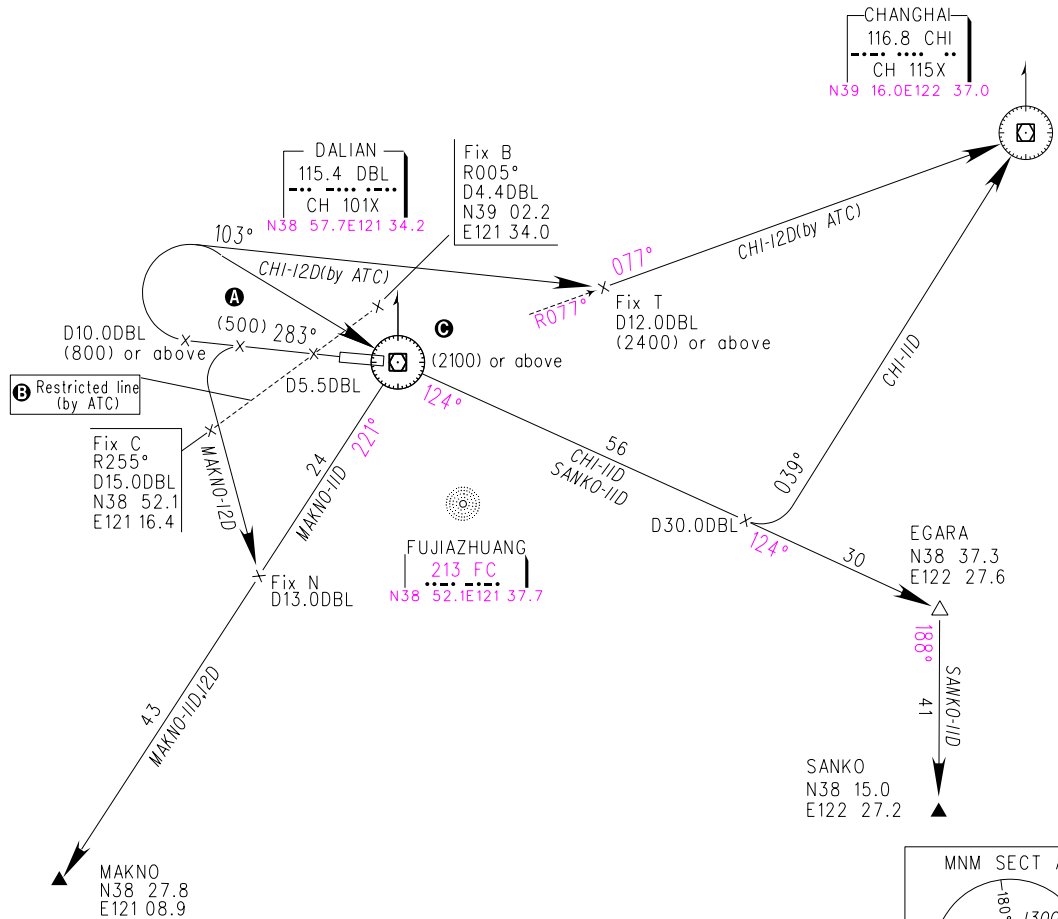
BEARINGS ARE MAGNETIC  
ALTITUDES, ELEVATIONS  
AND HEIGHTS IN METERS  
DME DISTANCES IN  
NAUTICAL MILES  
DISTANCES IN KM

TL by ATC  
TH by ATC



NOT TO SCALE

Departure turn MAX IAS 380kmH



**Note:** **A** An obstacle 4630m west of RWY10 THR and 398m north of RCL, height 218.3m. Take off climb gradient 5.7% or above. Climb gradient unlimited when VIS above 4800m, Ceiling above 280m.  
**B** While ATC require a departing aircraft not to traverse the restricted line, pilot should strictly obey the instruction and conduct left turn at (500) or above before restricted line, otherwise, departing from RWY28 is forbidden.  
**C** CHI-11D, SANKO-11D, MAKNO-11D: The aircraft which can not reach (2100) over 'DBL' after departure turn shall following ATC instructions.

Changes: D-ATIS, coordinates of 'DBL', 'CHI', 'FC', departure course angle.