

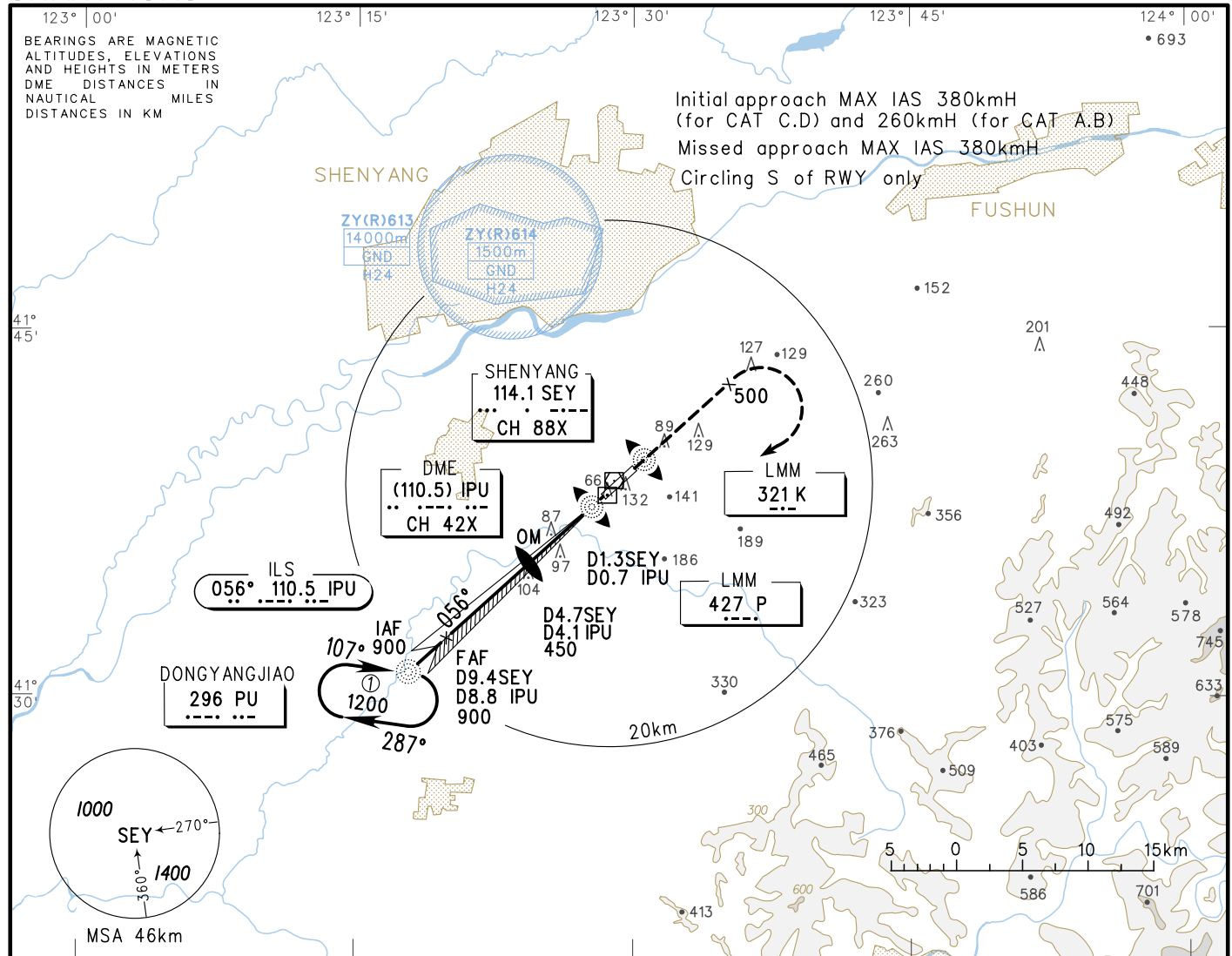
INSTRUMENT APPROACH CHART-ICAO

VAR8° W

AERODROME ELEV 61
HEIGHTS RELATED TO THR RWY06 ELEV 52

ATIS 127.45
APP 120.85(125.55)
TWR 118.1(124.3)

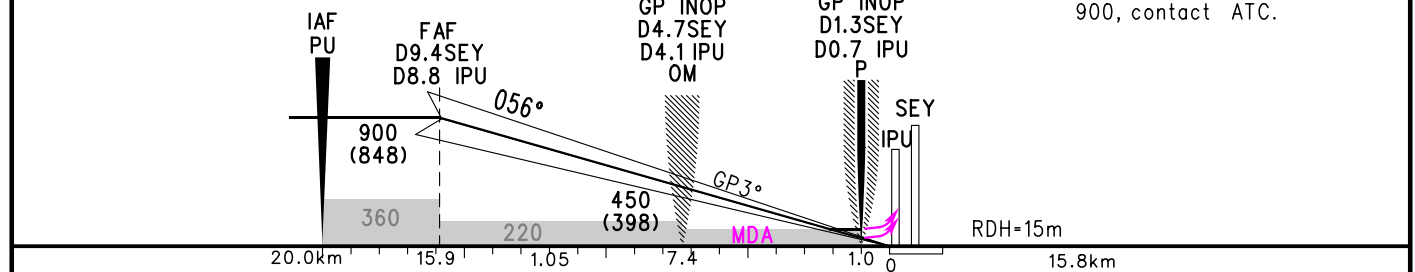
ZYTX SHENYANG/Taoxian
ILS/DME RWY06



| | | | | | | | | |
|---------|----------------|-----|-----|-----|-----|-----|-----|-----|
| GP INOP | DME (IPU) (NM) | 8 | 7 | 6 | 5 | 4 | 3 | 2 |
| | ATL (m) | 828 | 731 | 634 | 537 | 440 | 343 | 245 |

TL 3600
TA 3000
3300(QNH>1031HPA)
2700(QNH<979HPA)

MISSED APPROACH
Climb straight ahead to 500, turn RIGHT inbound to PU at 900, contact ATC.



| | A | B | C | D | FAF-MAPt(GP INOP) 14.9km | | | | | | | | |
|-----------------------|--------------------|---|--------------------|---|--------------------------|------|------|------|------|------|------|--|--|
| ILS/DME DA(H) RVR/VIS | 112(60) 550/800 | | 117(65) 550/800 | | GS in kt | 80 | 100 | 120 | 140 | 160 | 180 | | |
| | | | | | kmH | 150 | 185 | 220 | 260 | 295 | 335 | | |
| GP INOP MDA(H) VIS | 165(113) 1300 | | | | Time min:sec | 6:02 | 4:50 | 4:01 | 3:27 | 3:01 | 2:41 | | |
| | | | | | Rate of descent m/s | 2.2 | 2.7 | 3.2 | 3.8 | 4.3 | 4.9 | | |
| CIRCLING MDA(H) VIS | 260(199) 1600 | | 320(259) 3600 | | 330(269) 4000 | | | | | | | | |

Changes: Conversion table.