

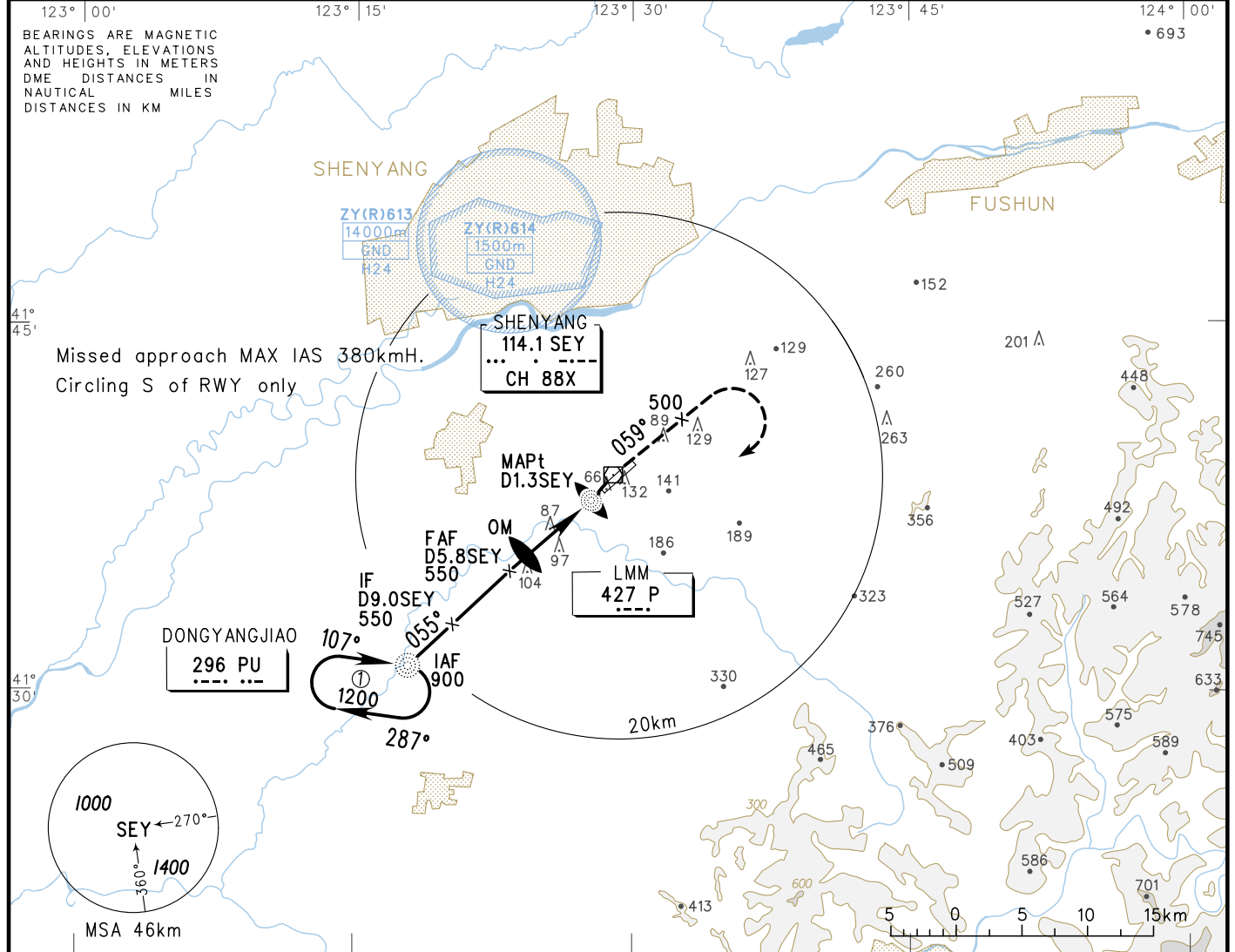
INSTRUMENT APPROACH CHART-ICAO

VAR8° W

AERODROME ELEV 61
HEIGHTS RELATED TO THR RWY06 ELEV 52

ATIS 127.45
APP 120.85(125.55)
TWR 118.1(124.3)

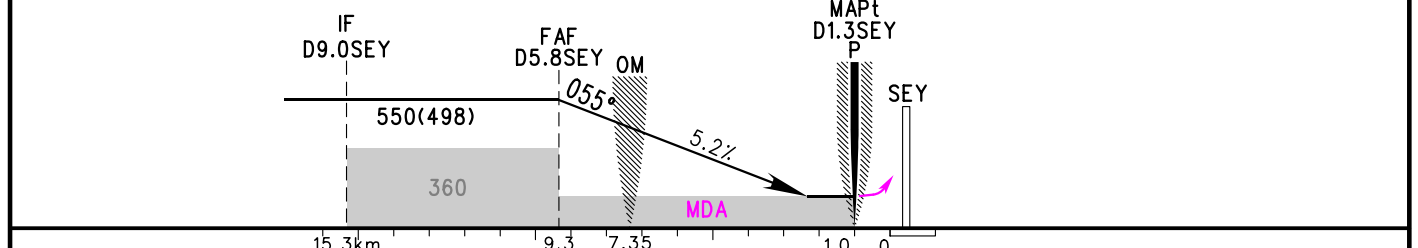
ZYTX SHENYANG/Taoxian
VOR/DME RWY06



| | | | | | | | | |
|----------------|---|---|---|-----|-----|-----|-----|---|
| DME (SEY) (NM) | 8 | 7 | 6 | 5 | 4 | 3 | 2 | 1 |
| ATL (m) | | | | 478 | 381 | 284 | 187 | |

TL 3600
TA 3000
3300(QNH≥1031HPA)
2700(QNH≤979HPA)

MISSED APPROACH
Turn right to R059° at SEY, Climb straight ahead to 500, turn RIGHT inbound to PU at 900, contact ATC



| | A | B | C | D | FAF-MAPt 8.3km | | | | | | | |
|------------------------|------------------|------------------|---|------------------|---------------------|------|------|------|------|------|------|--|
| VOR/DME MDA(H) VIS | 175(123) 1500 | | | | GS in kt | 80 | 100 | 120 | 140 | 160 | 180 | |
| | | | | | kmH | 150 | 185 | 220 | 260 | 295 | 335 | |
| CIRCLING MDA(H) VIS | 260(199) 1600 | 320(259) 3600 | | 330(269) 4000 | Time min:sec | 3:22 | 2:41 | 2:14 | 1:55 | 1:41 | 1:30 | |
| | | | | | Rate of descent m/s | 2.2 | 2.7 | 3.2 | 3.8 | 4.3 | 4.9 | |

Changes: Conversion table.